



Parts Manual

Mfg. No: 425009x8A
Lawn Tractor (2002)

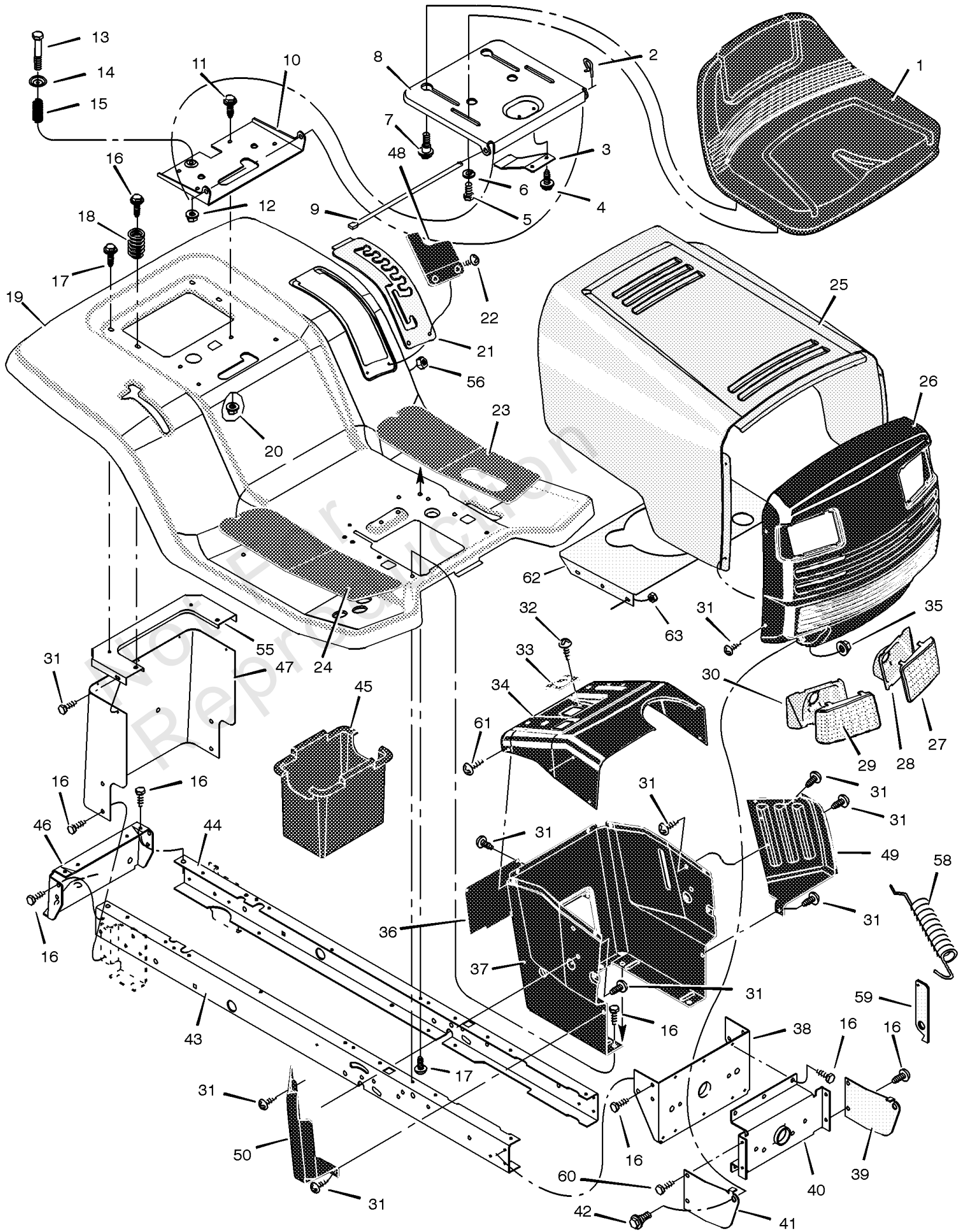
Model Components	Page
Chassis & Hood.....	4
Decals.....	8
Electrical System.....	10
Engine Mount.....	12
Motion Drive.....	14
Mower Housing.....	18
Mower Housing Suspension.....	22
Steering.....	24
Utility Dump Cart (part 1).....	26
Utility Dump Cart (part 2).....	28
Torque Specification Chart.....	30

Not For
Reproduction

Chassis & Hood

Note: Unless noted otherwise, use the standard torque specifications

Mfg. No: 425009x8A



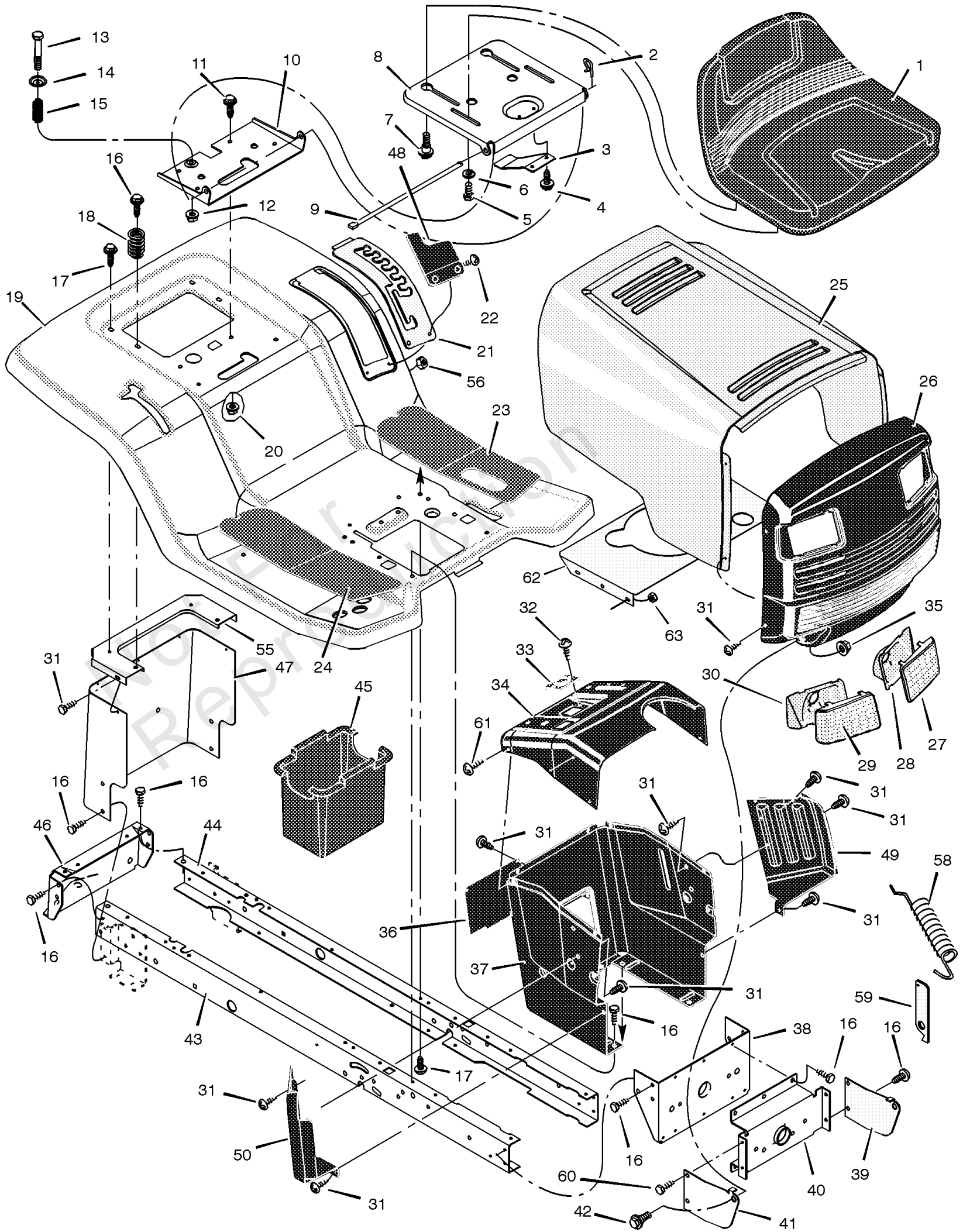
Chassis & Hood

REF NO	PART NO	QTY	DESCRIPTION
1	690566MA		Seat
2	028X23MA		Cap, Push On
3	094057MA		Spring
4	26X229MA		Screw
5	1001054MA		Bolt, Wing
6	017X47MA		Washer
7	009X56MA		Bolt, Shoulder
8	094154E700		Support, Seat
9	094156ZMA		Rod, Pivot
10	094153E700MA		Bracket, Pivot
11	001X45MA		Bolt
12	015X89MA		NUT .25-20 FLANGELOCK
13	009X55MA		Bolt, Shoulder
14	094155 Z		Washer
15	164X31		Spring
16	26X249MA		Screw
17	26X263MA		SCREW.25-20 S-T
18	164X30MA		Spring
19	095326E700		Deck, Seat
20	015X88MA		Nut
21	094194E700		Plate, Index
22	009X47MA		Screw
23	094383MA		Mat, Left
24	094382MA		Mat, Right
25	094322E700		Hood
26	094087E700		Grille
27	094093MA		Lens, Left
28	094089 Z		Bezel, Left
29	094092MA		Lens, Right
30	094088 Z		Bezel, Right
31	26X270		Screw
32	26X238MA		Screw
33	094075		Bearing, Steering
34	094590E700		Dash
35	15X124		Nut
36	093007E700		Panel, Access
37	095318E700		Support, Dash
38	1001270E700MA		Bracket, Rear Hanger
39	094085E701MA		Support, Left Grille
40	094007E700		Axle, Hanger
41	094084E701MA		Support, Right Grille
42	009X58MA		Bolt, Shoulder
43	1001268E700		Frame, Right
44	1001269E700		Frame, Left
45	690424MA		Container, Battery
46	1001002E700		Plate, Hitch
47	690218E700		Plate, Rear
48	094680MA		Cover, Detent
49	095218E700MA		Panel, Left Side
50	095217E700		Panel, Right Side
55	094186E700		Plate, Rear

Chassis & Hood

Note: Unless noted otherwise, use the standard torque specifications

Mfg. No: 425009x8A



Chassis & Hood

REF NO	PART NO	QTY	DESCRIPTION
56	015X81MA		NUT#10-24 MCLEANLOCK
58	165X124MA		Extension, Spring
59	094830 Z		Bracket
60	26X277MA		Screw
61	26X201MA		Screw
62	094113E701		Plenum
63	015X66MA		Nut
--	F-020713L		Book, Instruction

Not For Reproduction

No
Diagram
Available
Parts List
Only

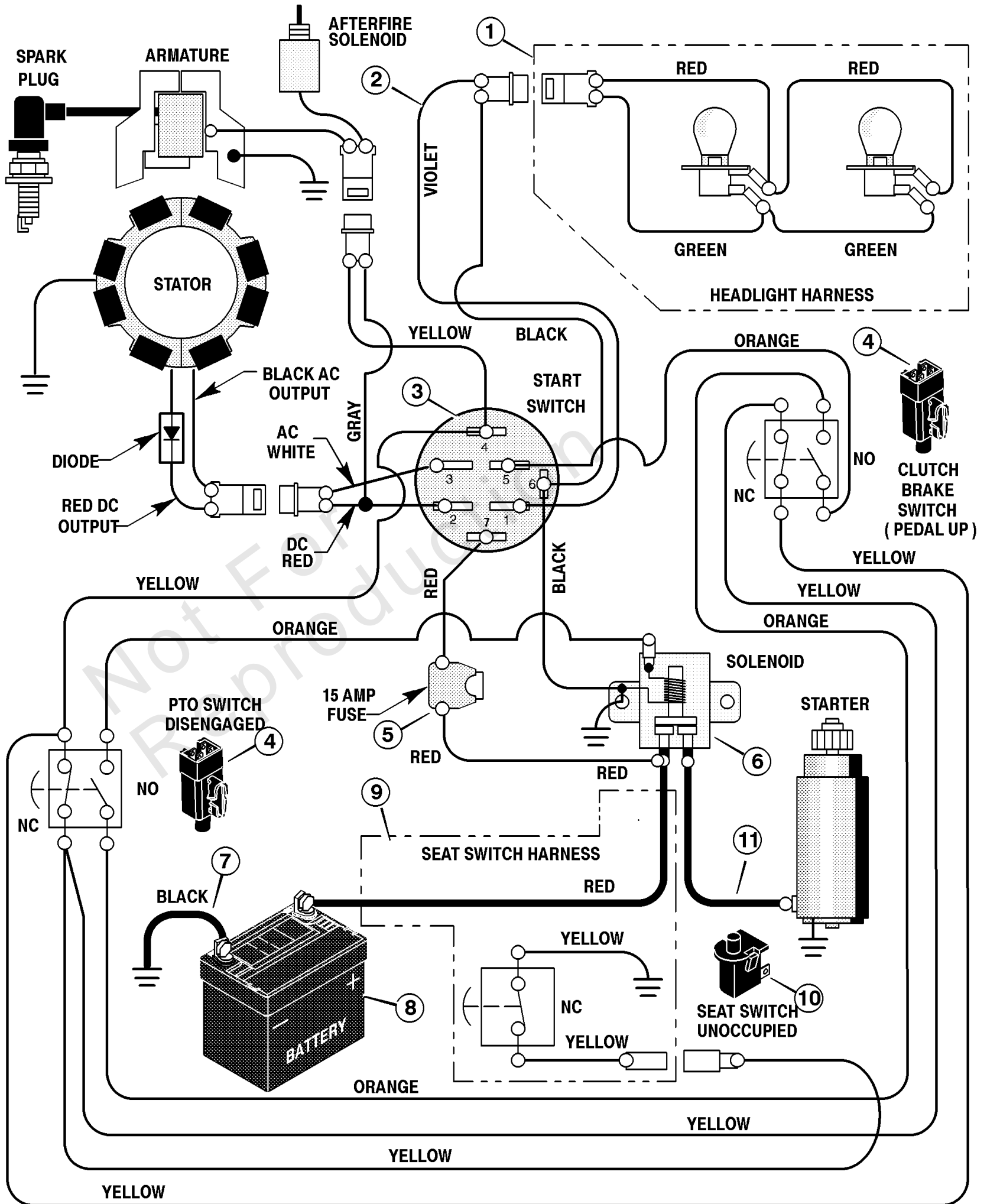
Decals

REF NO	PART NO	QTY	DESCRIPTION
	44X7568	1	Fuel Fill (Dash -Left Side)
	44X7197	1	DEKA (Battery)
	48X617	1	OHV / IC
	44X7325MA	1	Warning (Seat Deck - Middle)
	44X6279	1	1-6 Height Adjust -Left (Seat Deck -Left Side)
	44X6870MA	1	NO STEP (Mower Deck - Left Side)
	44X6554	1	Clutch / Brake (Footrest -Left Side)
	48X236MA	1	Cut Finger (Mower Deck -Right Side)
	48X1096	1	16.5 / 42" 6 Speed (Hood - Right Side)
	48X1095	1	16.5 / 42" 6 Speed (Hood - Left Side)
	48X630	1	3 Way (Mower Deck - Left Side)
	48X614	1	Wide Body (Seat Deck -Right Side Rear)
	48X613	1	Murray Select (Seat Deck -Middle Rear)
	44X6456MA	1	Deck Level Position / ONLY (Detent Plate -Under Cover)
	48X444	1	1-6 Transmission Drive (Seat Deck -Right Side)
	44X7535MA	1	Cutting Height (Seat Deck -Left Side)
	44X6259MA	1	Customer Care (Dash Top)
	48X3008	1	Service (Dash Top -under Hood)
	44X6600	1	Gage Wheel Instructions
	44X6670	1	Ignition Engage & Park Brake
	44X6941	1	Throttle Control with Choke
	44X7228MA	1	Gage Wheel Leveling
	48XC\615	1	Murray Select Logo
	48X086	1	16.5 HP B&S OHV/N/F

Electrical System

Note: Unless noted otherwise, use the standard torque specifications

Mfg. No: 425009x8A



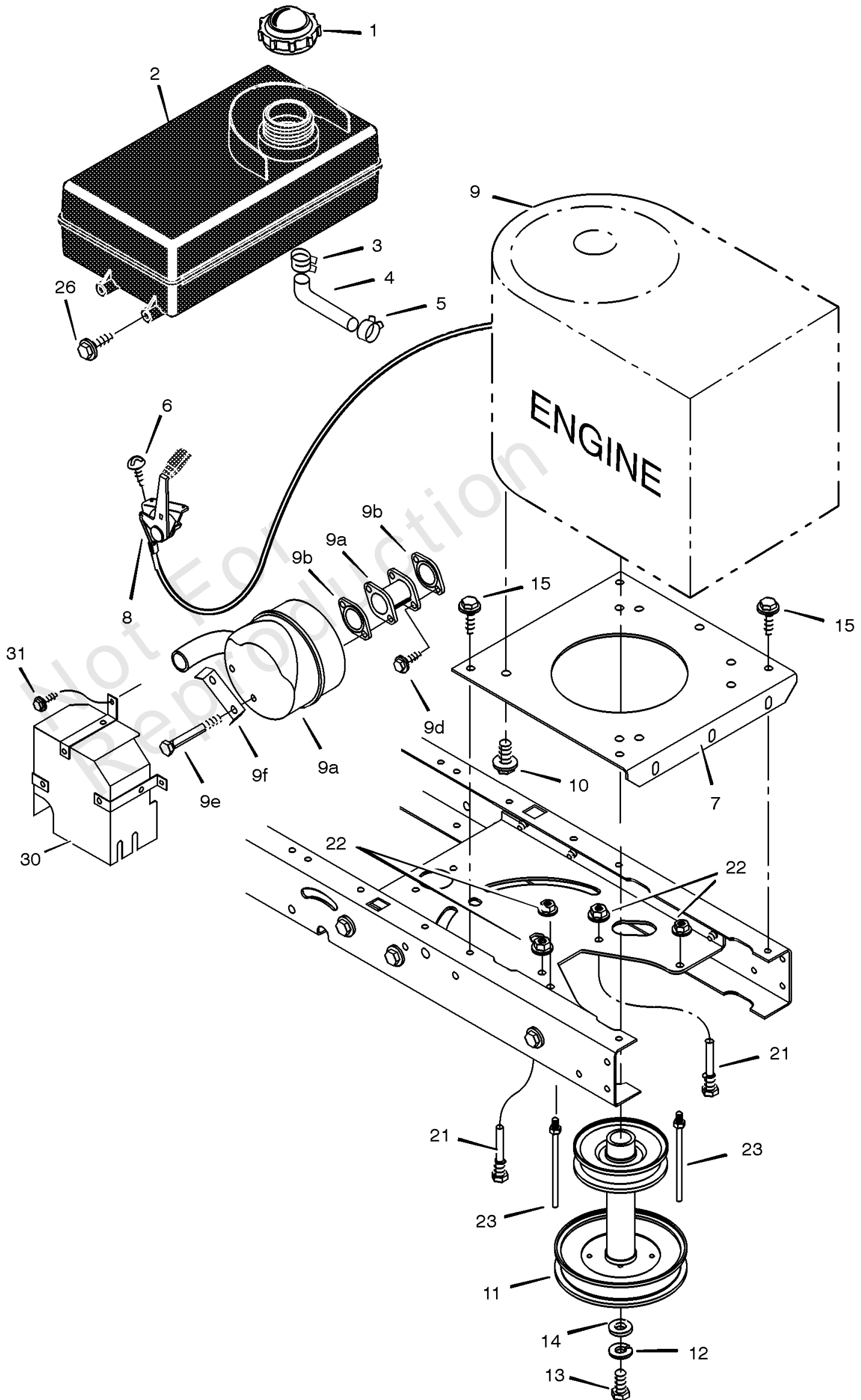
Electrical System

REF NO	PART NO	QTY	DESCRIPTION
1	250X92MA		Harness, Light Wire
--	092372		Socket, Light
--	090084MA		Bulb, Light
2	250X87MA		Harness, Chassis Wire
3	092556MA		Switch, Ignition
--	020729		Key, Ignition
--	091489MA		Nut, Hex
--	091488		Cap, Ignition
4	094136MA		Switch, Limit
5	054212		Fuse
--	407078MA		Holder, Fuse
6	094613		Solenoid
--	26X229MA		Screw, Mounting
--	15X116MA		Locknut
7	024X32MA		Cable, Battery Ground
--	26X213MA		Screw, Ground Cable
8	021075		Battery
--	002X82MA		Bolt, Carriage
--	014X79MA		Wingnut
9	250X67MA		Harness, Seat Switch Wire
10	094159MA		Switch, Seat Sensor
11	024X31MA		Cable

Engine Mount

Note: Unless noted otherwise, use the standard torque specifications

Mfg. No: 425009x8A



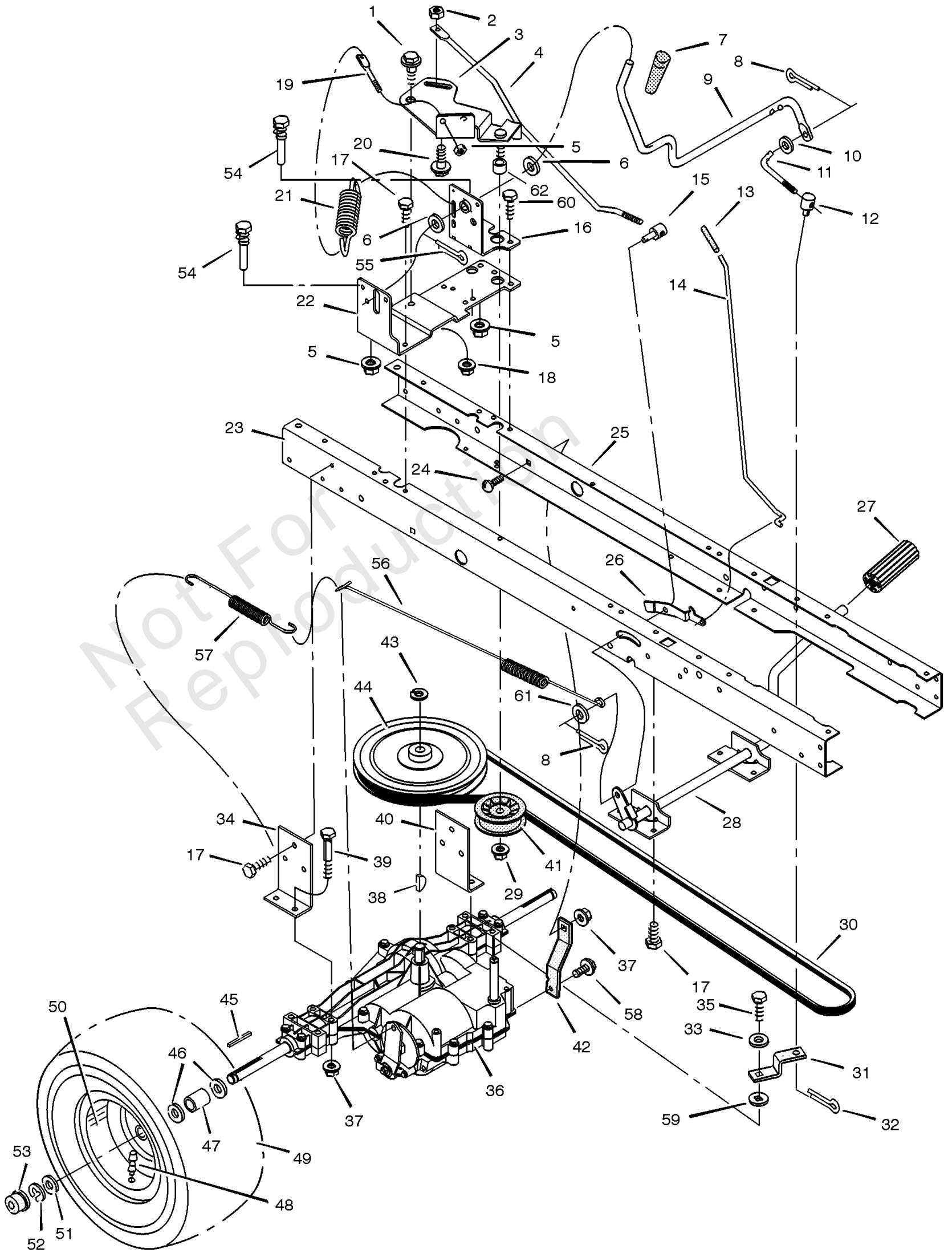
Engine Mount

REF NO	PART NO	QTY	DESCRIPTION
1	092317MA		FUEL CAP -(Included with Ref. No. 2)
2	7601092MA		TANK, Fuel 1.4 Gal.
3	095197MA		Hose Clamp -(Included with Ref. No. 2)
4	7601033MA		Fuel Line (Must cut to length) -(Included with Ref. No. 2)
5	095197MA		Hose Clamp -(Included with Ref. No. 2)
6	26X201MA		Screw
7	094006E700		Plate, Engine
8	091989		Throttle Control
9	-----		Engine
9A	690436MA		Muffler
9B	692236		GASKET, Exhaust
9C	095207MA		Adapter, Muffler
9D	06X103MA		Screw, Adapter
9E	009X59MA		Bolt, Muffler
9F	092378MA		LOCK-SCREW 223016
10	0025X7MA		Bolt, Engine Mount
11	690439MA		STK PULLEY 38-42 IN R
12	019X35MA		Lockwasher
13	01X140MA		Bolt, Hex
14	17X170MA		WASHER.46.97.25 FLAT
15	26X249MA		Screw
21	094349		Guide, Belt
22	015X79 Z		Nut, Flange
23	094066MA		Guide, Belt
26	26X253MA		Screw
30	092550MA		Shield, Heat
31	26X263MA		SCREW.25-20 S-T

Motion Drive

Note: Unless noted otherwise, use the standard torque specifications

Mfg. No: 425009x8A



Motion Drive

REF NO	PART NO	QTY	DESCRIPTION
1	009X39MA		Bolt, Shoulder
2	015X89MA		NUT .25-20 FLANGELOCK
3	690173ZMA		ARM, Idler
4	094041 Z		Rod, Clutch
5	015X79MA		Nut
6	17X102MA		Washer
7	092697MA		Grip
8	030X20MA		Pin, Cotter
9	094043 Z		Lever, Shift
10	017X47MA		Washer
11	094044ZMA		Link, Shift
12	021920ZMA		Nut, Adjuster
13	091079MA		Grip
14	1001245 Z		Rod, Parking Brake
15	094815ZMA		NUT-ADJUSTING
16	1001303 Z		Bracket, Shift Pivot
17	26X249MA		Screw
18	015X84MA		Nut
19	094042ZMA		Mount, Stud Spring
20	009X54MA		Bolt, Shoulder
21	165X116MA		Spring, Extension
22	1001302E700		Bracket, Right Shifter
23	1001268E700		Frame, Right
24	002X53MA		Bolt, Carriage
25	1001269E700		Frame, Left
26	094045 Z		Latch, Parking Brake
27	021544MA		Pedal
28	094038E701MA		Lever, Brake/Clutch
29	015X98MA		Nut
30	037X87MA		Belt, Motion Drive
31	094031ZMA		Yoke, Shift
32	0031X6MA		Pin, Hair
33	017X38MA		Washer
34	094184E700		Bracket, Right Transaxle
35	06X105MA		Bolt
36	-----		Transaxle **
37	015X88MA		Nut
38	020697MA		Key, Woodruff
39	01X155MA		Bolt
40	094185E700		Bracket, Left Transaxle
41	690409MA		Pulley
42	094433E701MA		BRACKET, Torque Strap, LH
43	0011X7MA		E-Ring
44	095094MA		Pulley, Drive
45	021553MA		Key, Square
46	17X160MA		Washer
47	690554 Z		Spacer, Transaxle
48	024373MA		VALVE STM&CP,TR41 SE

Footnotes:

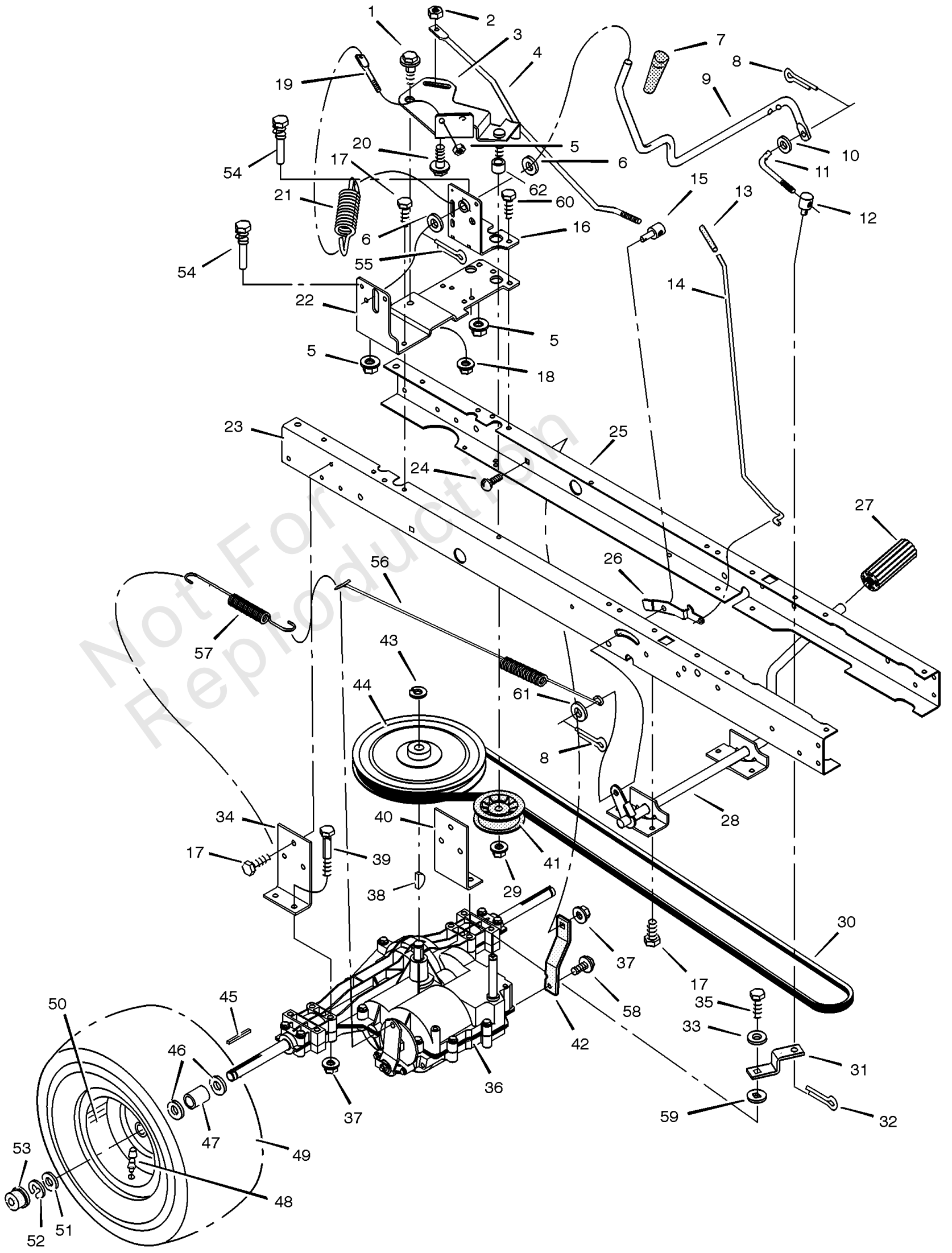
Note* When you order a tire, make sure to give the brand name of the tire so that the tread pattern on the tire will match.

Note** For information on Replacement Parts see the Central Parts Distributor on your area.

Motion Drive

Note: Unless noted otherwise, use the standard torque specifications

Mfg. No: 425009x8A



Motion Drive

REF NO	PART NO	QTY	DESCRIPTION
49	092374MA		Tire *
--	407049MA		Tube
50	092290601		Wheel & Tire Assembly
51	17X195MA		Washer
52	0011X3MA		RING, E .750D .050T
53	094618MA		HUB CAP
54	093349MA		GUIDE SCREW - ZINC
55	0031X4MA		Pin, Hair
56	165X115MA		Spring, Extension
57	165X92MA		Spring, Extension
58	26X216MA		Screw
59	17X148MA		Washer
60	26X267MA		Screw
61	17X169MA		Washer
62	690369MA		Spacer

Not For
Reproduction

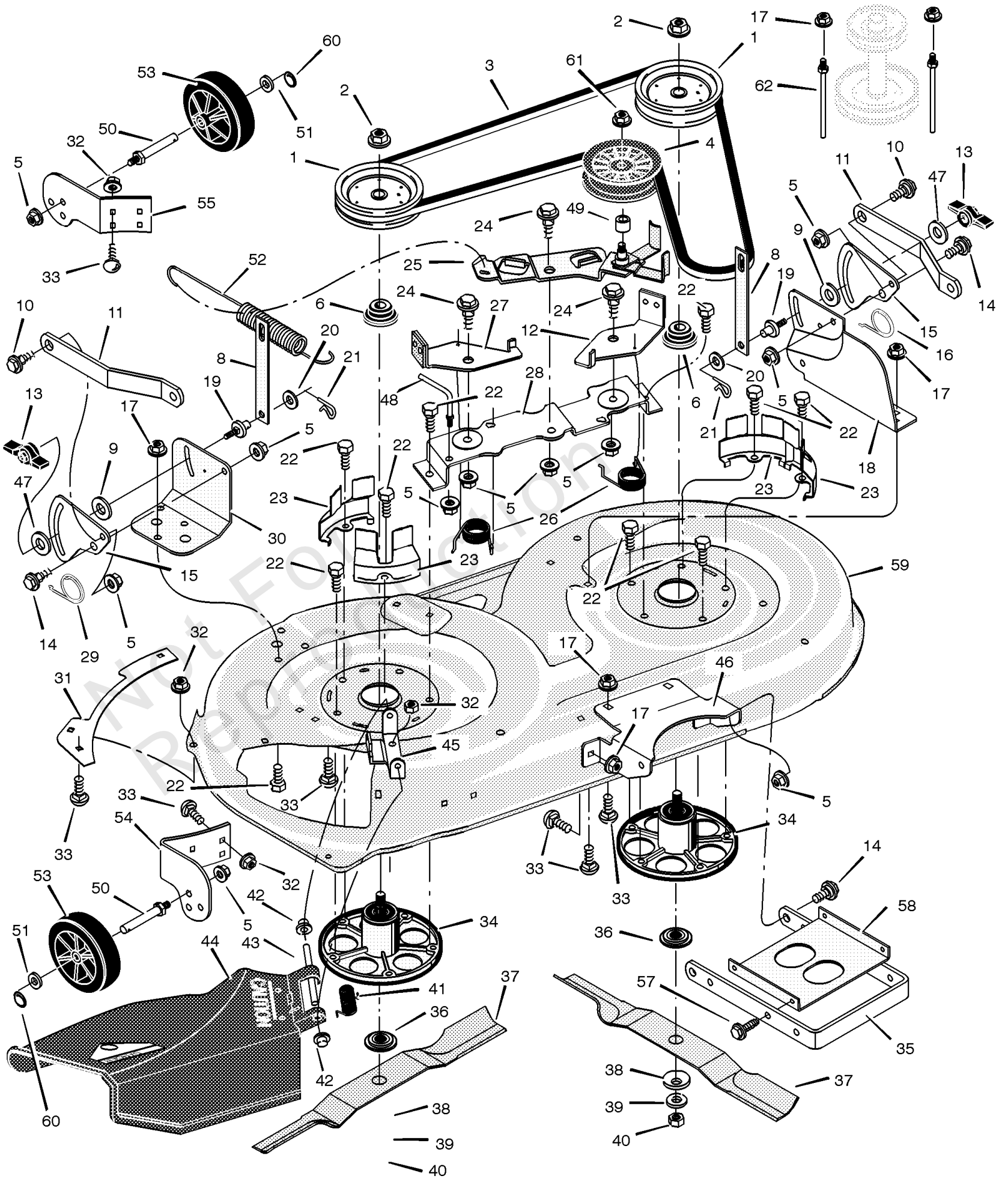
Footnotes:

Note* When you order a tire, make sure to give the brand name of the tire so that the tread pattern on the tire will match.
Note** For information on Replacement Parts see the Central Parts Distributor on your area.

Mower Housing

Note: Unless noted otherwise, use the standard torque specifications

Mfg. No: 425009x8A



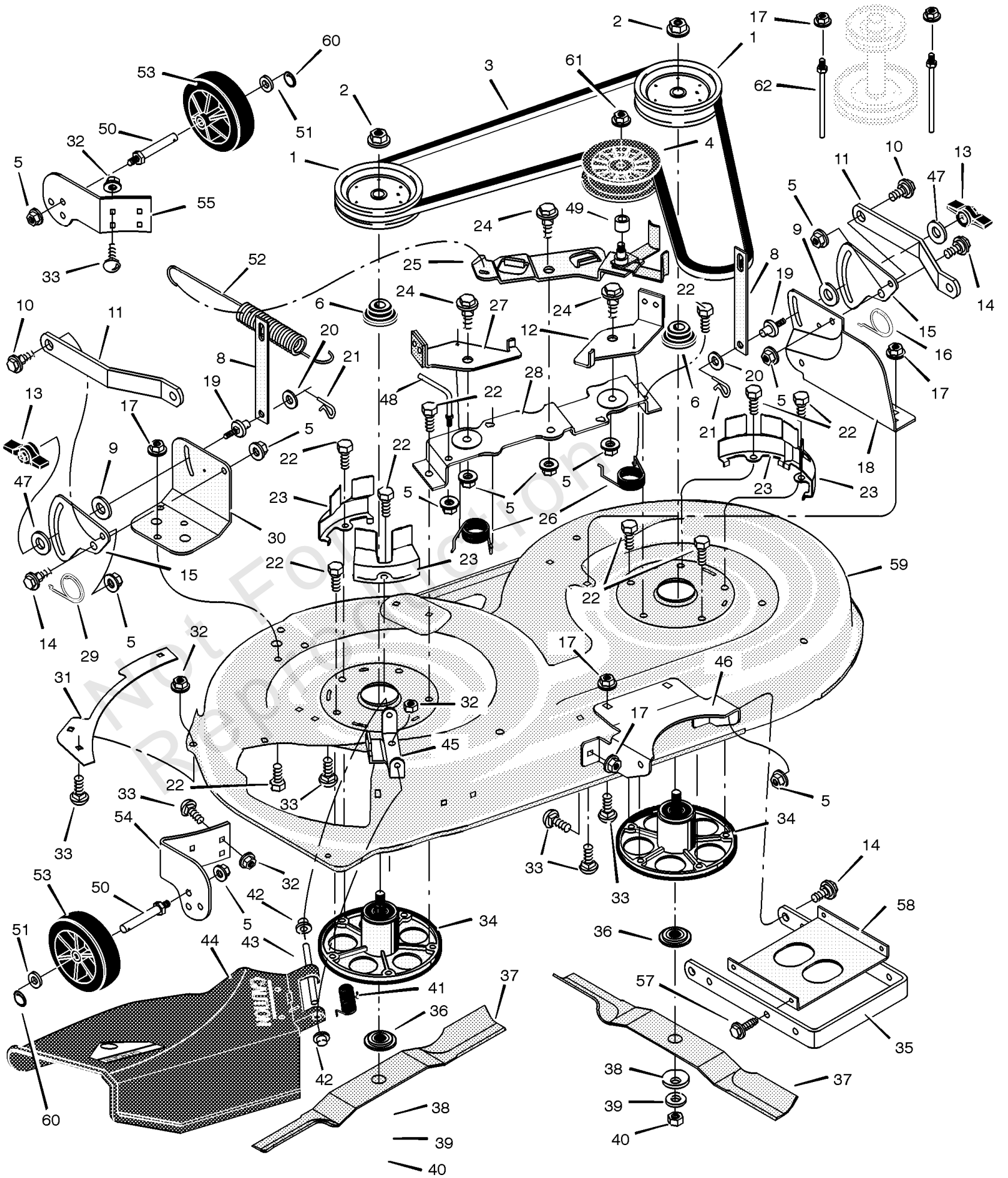
Mower Housing

REF NO	PART NO	QTY	DESCRIPTION
1	494199MA		PULLEY, BLD DRV 42
2	15X121		Nut, Hex
3	037X88MA		Belt, Mower Drive
4	690387MA		Pulley, Idler
5	015X84MA		Nut, Flange
6	1001197MA		Spacer, Pulley -(Included with Ref. No. 34)
8	690212E700		Link, Lift
9	094137MA		FRICITION PAD
10	009X52MA		Bolt, Shoulder
11	094055E700		Bracket, Suspension
12	094049E700		Pad Assembly, Left Brake
13	094068MA		Knob
14	009X51MA		BOLT-SHD.38-16X.499D
15	094128E700MA		Plate, Suspension
16	166X43MA		Spring
17	015X79MA		Nut, Flange
18	094192E700		Bracket, Suspension
19	095194		Pin, Hanger
20	017X91MA		Washer
21	0031X4MA		Pin, Hair
22	0025X7MA		Bolt
23	094051E700		Cover, Pulley
24	009X39MA		Bolt, Shoulder
25	690408E700		Arm, Idler
26	166X41MA		Spring
27	094047E700		Pad Assembly, Right Brake
28	094193E700		Bracket, Brake
29	166X42MA		Spring
30	094191E700		Bracket, Suspension
31	092426E700		Plate
32	015X88MA		Nut, Flange
33	002X53MA		Bolt, Carriage
34	1001200MA		JACKSHAFT HSNG ASSY
35	690539E700		Bracket, Suspension
36	690411MA		Adapter, Blade
37	095100E701MA		Blade
38	17X166MA		Washer
39	17X165MA		Washer
40	15X100MA		Nut
41	0166X4MA		Spring
42	028X23MA		Cap, Push On
43	094957ZMA		ROD, Deflector
44	094707SE		Deflector Assembly
45	094956E700		Bracket, Deflector Hinge
46	094686E701MA		Bracket, Front Hanger
47	017X45MA		WASHER,FLAT .33 1. 16
48	094781MA		Guide, Belt
49	690369MA		Spacer
50	094025MA		BOLT, Gauge Wheel
51	017X91MA		Washer

Mower Housing

Note: Unless noted otherwise, use the standard torque specifications

Mfg. No: 425009x8A



Mower Housing

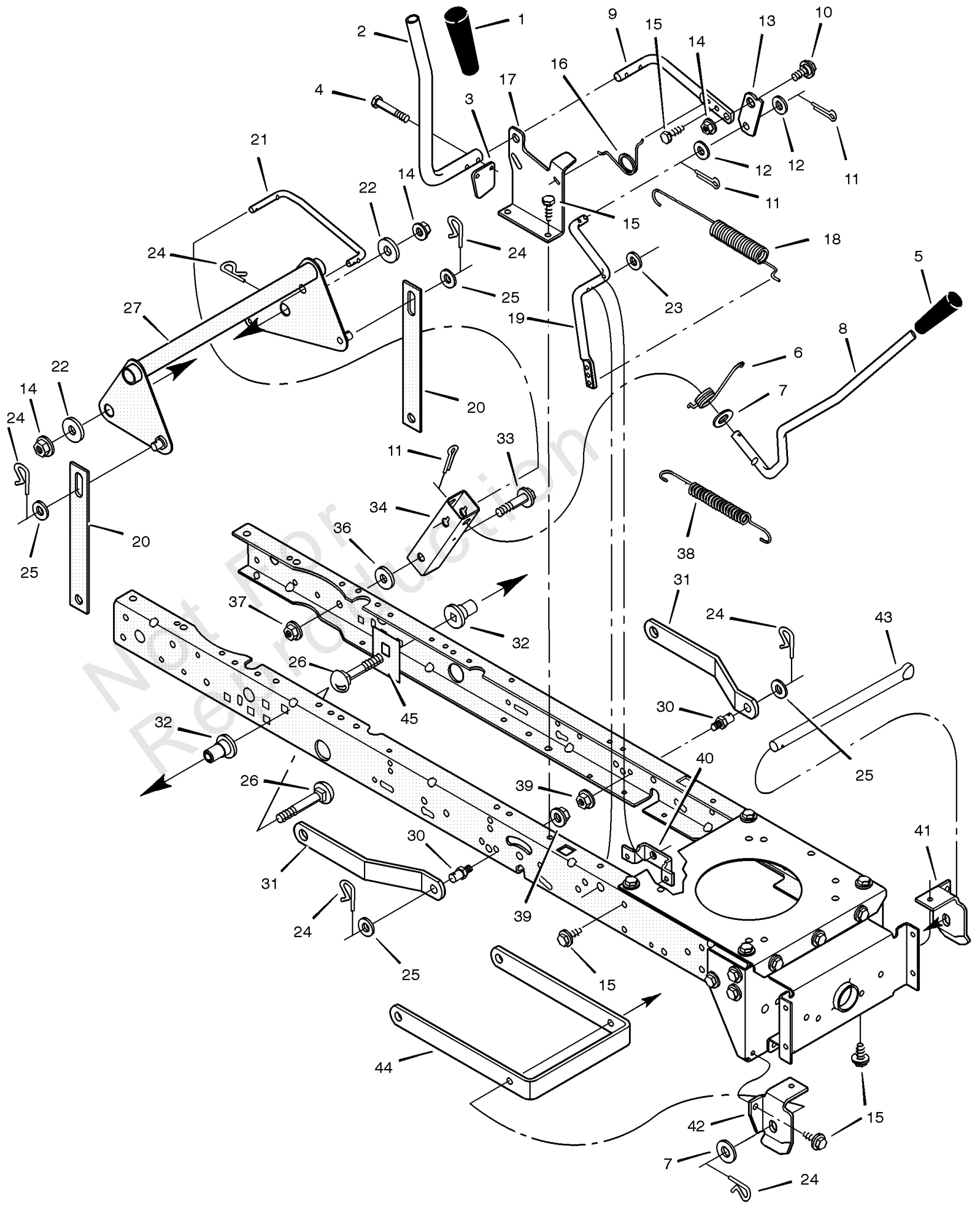
REF NO	PART NO	QTY	DESCRIPTION
52	165X119MA		Spring, Extension
53	092683MA		Wheel, Gage
54	1001260E700		Bracket, Right Wheel
55	092423E700		Bracket, Left Wheel
57	26X249MA		Screw
58	094604E700		Stiffener
59	094814E700		Housing, Blade -(Includes Ref. No. 17, 18, 30, 31, 32, 33, 45, 46, 53, 54, 55, and 56)
60	031X11MA		Ring, Locking
61	015X98MA		Nut, Flange
62	094066MA		Guide, Belt

Not For Reproduction

Mower Housing Suspension

Note: Unless noted otherwise, use the standard torque specifications

Mfg. No: 425009x8A



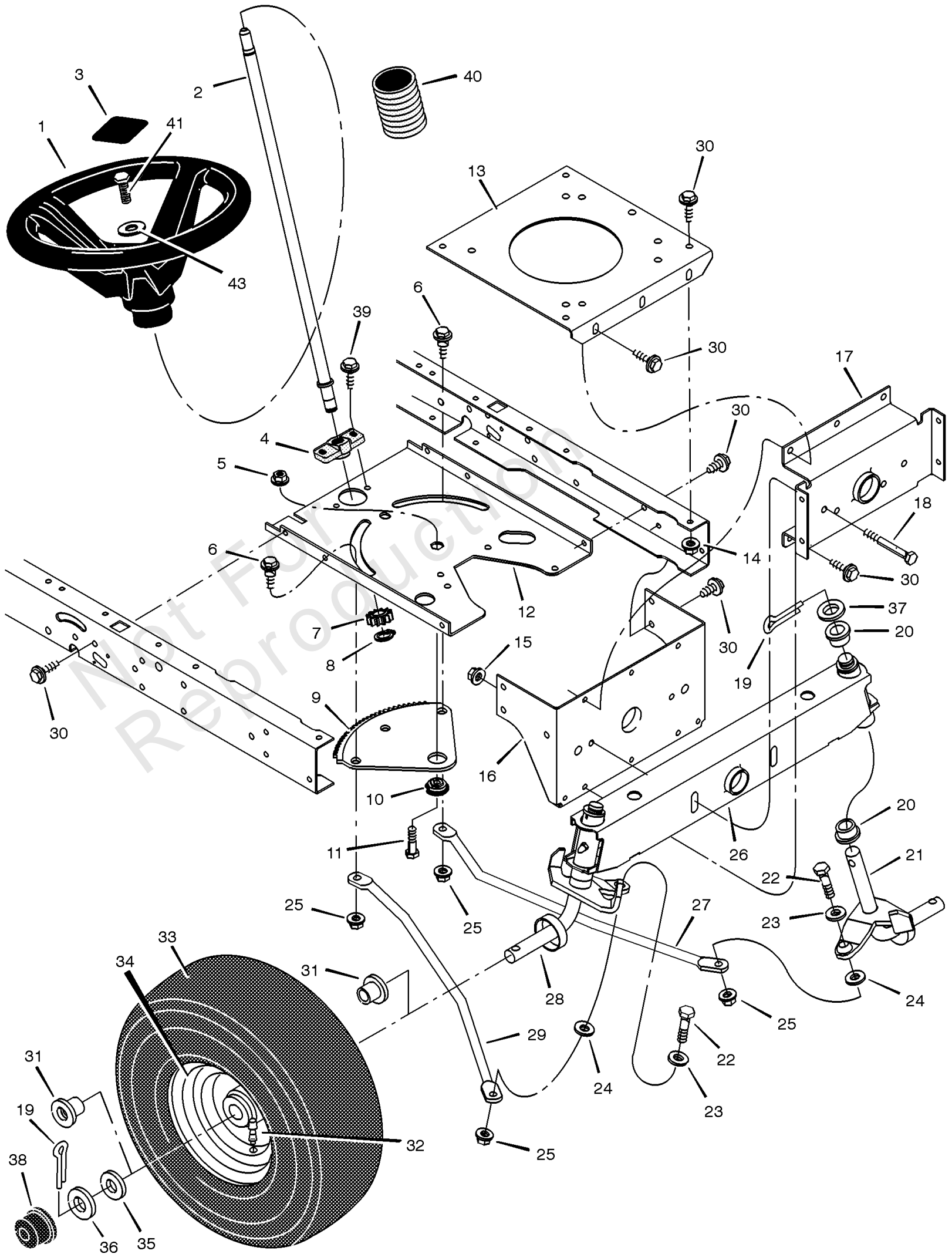
Mower Housing Suspension

REF NO	PART NO	QTY	DESCRIPTION
1	092698MA		Grip
2	094100 Z		Handle, PTO
3	094022 Z		Pad, Switch
4	0025X3MA		Screw, Hex
5	092697MA		Grip
6	166X40MA		Spring
7	17X103MA		Washer
8	690533MA		Lever, Lift
9	094017 Z		Lever, PTO
10	009X39MA		Bolt, Shoulder
11	030X20MA		Pin, Cotter
12	017X57MA		Washer
13	094004 Z		Link, PTO
14	015X84MA		Nut, Flange
15	26X249MA		Screw
16	166X39MA		Spring
17	094018E700		Bracket, PTO
18	165X119MA		Spring
19	690394E700		Crank, PTO
20	690212E700		Link, Lift
21	690122E700		Link, Lift Handle
22	17X168ZMA		Washer
23	017X57MA		Washer
24	0031X4MA		Pin, Hair
25	017X91 Z		Washer
26	002X85MA		Bolt, Carriage
27	1001111E700MA		Lever Assembly, Lift
30	094067MA		Pin
31	094055E700		Bracket, Rear Suspension
32	690151MA		Spacer, Lifter
33	009X53MA		Bolt, Shoulder
34	094015E700		Bracket, Pivot
36	17X191MA		Washer
37	015X84MA		Nut, Flange
38	165X131MA		Spring
39	015X68MA		Nut, Flange
40	094005E700		Bracket, PTO
41	094027E700		Hanger, Left Deck
42	094026E700		Hanger, Right Deck
43	094158ZMA		Rod, Hanger
44	690539E700		Bracket, Suspension
45	1001098E700		Plate, Stiffening

Steering

Note: Unless noted otherwise, use the standard torque specifications

Mfg. No: 425009x8A



Steering

REF NO	PART NO	QTY	DESCRIPTION
1	095336		Wheel, Steering
2	690337MA		Post, Steering
3	095338MA		Insert, Steering Wheel
4	094124MA		Bearing -(Included with Ref. No. 2)
5	15X111MA		Nut, Flange
6	009X57MA		Bolt, Shoulder
7	690183MA		GEAR - PINION -(Included with Ref. No. 2)
8	011X25MA		Ring, Snap -(Included with Ref. No. 2)
9	094121E700		Gear, Sector
10	094123MA		Bearing
11	001X84MA		CAPSCREW, Hex Head, 5/16-18 x 1
12	1001121E700		Plate, Steering
13	094006E700		Plate, Engine
14	015X88MA		Nut, Flange
15	15X118MA		Nut, Flange
16	1001270E700MA		Bracket, Hanger
17	094007E700		Axle, Hanger
18	01X146MA		Bolt
19	030X49MA		Pin, Cotter
20	690150MA		Bearing
21	094576E700		Spindle Assembly, Left
22	01X111MA		Bolt
23	17X104MA		Washer
24	017X53 Z		Washer
25	015X84MA		Nut, Flange
26	690211E700		Axle Assembly
27	095329E700		Drag Link, Left
28	094575E700		Spindle Assembly, Right
29	095328E700		Drag Link, Right
30	26X249MA		Screw
31	091334		Bearing, Wheel
32	024373MA		VALVE STM&CP,TR41 SE
33	091912MA		Tire *
--	407924		Tube
34	094579601		Wheel and Tire Assembly
35	17X195MA		Washer
36	17X192MA		Washer
37	17X113MA		WASHER.76-1.2 13G FL
38	094618MA		HUB CAP
39	26X267MA		Screw
40	092059MA		Bellows
41	0025X3MA		Screw, Hex
43	17X146MA		Washer

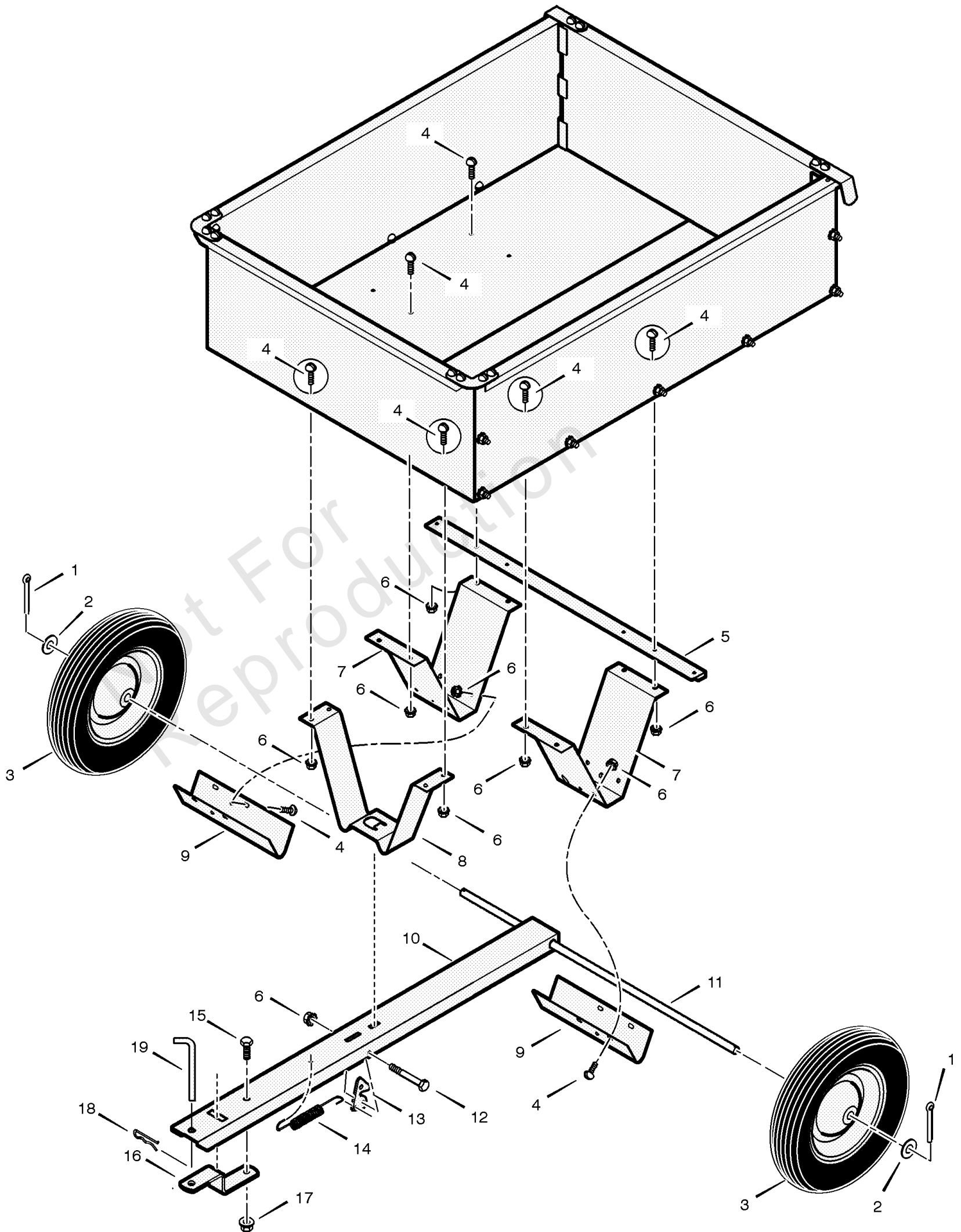
Footnotes:

Note* When you order a tire, make sure to give the brand name of the tire so that the tread pattern on the tire will match.

Utility Dump Cart (part 1)

Note: Unless noted otherwise, use the standard torque specifications

Mfg. No: 425009x8A



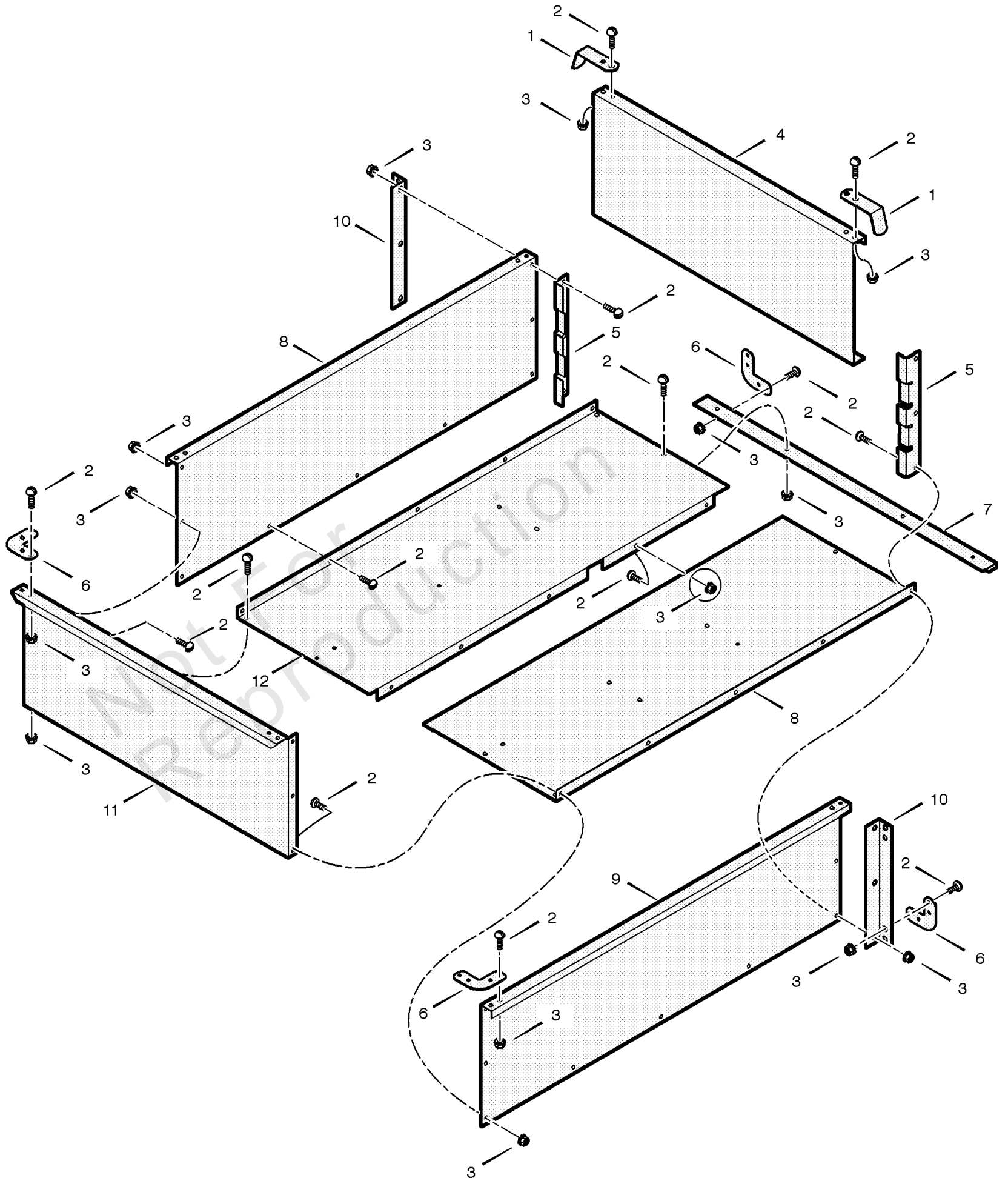
Utility Dump Cart (part 1)

REF NO	PART NO	QTY	DESCRIPTION
1	030X49MA		Pin, Cotter
2	17X197MA		Washer
3	1001488MA		Wheel
4	004X24MA		Screw 14-20x0.50
5	1001472E701		Support, Bottom
6	015X66MA		Nut, Keps 1/4-20
7	1001466E701MA		Support, Axle
8	1001465E701		Support, Tongue
9	1001481E701MA		Retainer, Axle
10	1001464E701		Tongue (Black)
11	1001473MA		Axle
12	01X117		Bolt, Hex 1/4-20x3.25
13	1001480E701MA		Latch
14	165X75MA		Spring
15	001X85MA		Bolt, Hex 3/8-16x0.75
16	1001479E701MA		Hitch
17	015X84MA		Nut, Lock 3/8-16
18	0031X6MA		Pin, Hair
19	1001489 Z		Pin, Drawbar
--	F-020900L		Book, Instruction
--	48X1101		Decal, Warning

Utility Dump Cart (part 2)

Note: Unless noted otherwise, use the standard torque specifications

Mfg. No: 425009x8A



Utility Dump Cart (part 2)

REF NO	PART NO	QTY	DESCRIPTION
1	1001476E701MA		Support, Side
2	004X24MA		Screw 1/4-20x0.50
3	015X66MA		Nut, Keps 1/4-20
4	1101469E701		Tailgate (Black)
5	1001474E701MA		Retainer, Tailgate
6	1001477E701MA		Bracket, Corner
7	1001475E701		Brace, Rear
8	1001470E701		Bottom, Right
9	1001467E701		Panel, Side (Black)
10	1001478E701MA		Support, Side
11	1001468E701		Panel, Front
12	1001471E701		Bottom, Left

Not For Reproduction

Hardware Identification & Torque Specifications

Torque Specification Chart								
FOR STANDARD METRIC MACHINE HARDWARE (Tolerance ± 20%)								
Property Class	5.6		8.8		10.9		12.9	
	Class 5.6		Class 8.8		Class 10.9		Class 12.9	
Size Of Hardware	in/lbs	Nm.	in/lbs	Nm.	in/lbs	Nm.	in/lbs	Nm.
	ft/lbs		ft/lbs		ft/lbs		ft/lbs	
M3	5.88	.56	13.44	1.28	19.2	1.80	22.92	2.15
M4	13.44	1.28	30.72	2.90	43.44	4.10	52.56	4.95
M5	26.4	2.50	60.96	5.75	5.97	8.10	7.15	9.7
M6	44.64	4.3	7.3	9.9	10.3	14	12.1	16.5
M7	5.2	7.1	12.1	16.5	16.9	23	19.9	27
M8	7.7	10.5	17.7	24	25	34	29	40
M10	15	21	35	48	50	67	59	81
M12	26	36	61	83	86.2	117	103	140
M14	42	58	101	132	136	185	162	220
M16	64	88	147	200	210	285	250	340
M18	89	121	202	275	287	390	346	470
M20	126	171	290	390	405	550	486	660
M22	169	230	390	530	559	745	656	890
M24	217	295	497	375	708	960	840	1140
M27	320	435	733	995	1032	1400	1239	1680
M30	435	590	995	1350	1401	1900	1681	2280
M33	590	800	1349	1830	1902	2580	2278	3090
M36	759	1030	1740	2360	2441	3310	2935	3980
M39	988	1340	2249	3050	3163	4290	3798	5150

Torque Specification Chart						
FOR STANDARD MACHINE HARDWARE (Tolerance ± 20%)						
Hardware Grade	No Marks		SAE Grade 5		SAE Grade 8	
	SAE Grade 2		SAE Grade 5		SAE Grade 8	
Size Of Hardware	in/lbs	Nm.	in/lbs	Nm.	in/lbs	Nm.
	ft/lbs		ft/lbs		ft/lbs	
8-32	19	2.1	30	3.4	41	4.6
8-36	20	2.3	31	3.5	43	4.9
10-24	27	3.1	43	4.9	60	6.8
10-32	31	3.5	49	5.5	68	7.7
1/4-20	66	7.6	8	10.9	12	16.3
1/4-28	76	8.6	10	13.6	14	19.0
5/16-18	11	15.0	17	23.1	25	34.0
5/16-24	12	16.3	19	25.8	29	34.0
3/8-16	20	27.2	30	40.8	45	61.2
3/8-24	23	31.3	35	47.6	50	68.0
7/16-14	30	40.8	50	68.0	70	95.2
7/16-20	35	47.6	55	74.8	80	108.8
1/2-13	50	68.0	75	102.0	110	149.6
1/2-20	55	74.8	90	122.4	120	163.2
9/16-12	65	88.4	110	149.6	150	204.0
9/16-18	75	102.0	120	163.2	170	231.2
5/8-11	90	122.4	150	204.0	220	299.2
5/8-18	100	136	180	244.8	240	326.4
3/4-10	160	217.6	260	353.6	386	525.0
3/4-16	180	244.8	300	408.0	420	571.2
7/8-9	140	190.4	400	544.0	600	816.0
7/8-14	155	210.8	440	598.4	660	897.6
1-8	220	299.2	580	788.8	900	1,244.0
1-12	240	326.4	640	870.4	1,000	1,360.0

The guides and ruler furnished below are designed to help you select the appropriate hardware.

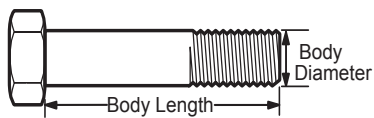


Nut, M8

Thread Diameter (mm)

Inside Diameter (in) Threads per inch

Nut, 1/2-16



Screw, M8- 1.25 x 25

Thread Diameter (mm) Distance between threads (mm) Body Length (mm)

Body Diameter Threads per inch Body Length (in)

Screw, 1/2- 16 x 2



Standard Hardware Sizing

When a washer or nut is identified as 1/2" (M8), this is the *Nominal size*, meaning the *inside diameter* is 1/2 inch (8mm metric thread diameter); if a second number is present it represents the *threads per inch* (distance between threads).

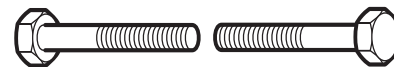
When bolt or capscrew is identified as 1/2 - 16 x 2" (M8 - 1.25 x 50), this means the *Nominal size*, or body diameter is 1/2 inch (8mm metric thread diameter), the second number, 16, represents the *threads per inch*, (*distance between threads*). The final number is the body length of the bolt or screw, 2 inches (50mm).

NOTES

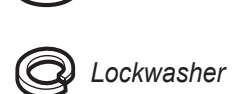
- These torque values are to be used for all hardware excluding: locknuts, self-tapping screws, thread forming screws, sheet metal screws and socket head setscrews.
- Recommended seating torque values for locknuts:
 - for prevailing torque locknuts - use 65% of grade 5 torques.
 - for flange whizlock nuts and screws - use 135% of grade 5 torques.
- Unless otherwise noted on assembly drawings, all torque values must meet this specification.

Common Hardware Types

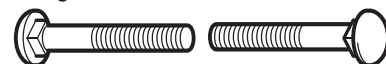
Hex Head Capscrew



Washer



Carriage Bolt



Hex Nut

Wrench & Fastener Size Guide

1/4" Bolt or Nut Wrench—7/16"	5/16" Bolt or Nut Wrench—1/2"	3/8" Bolt or Nut Wrench—9/16"	7/16" Bolt or Nut Wrench (Bolt)—5/8" Wrench (Nut)—11/16"	1/2" Bolt or Nut Wrench—3/4"
M6 Bolt or Nut Wrench—10mm	M8 Bolt or Nut Wrench—13mm	M10 Bolt or Nut Wrench—17mm	M12 Bolt or Nut Wrench—19mm	M14 Bolt or Nut Wrench—22mm

MURRAY®