



Parts Manual

Mfg. No: 461603x48A
Garden Tractor (2003)

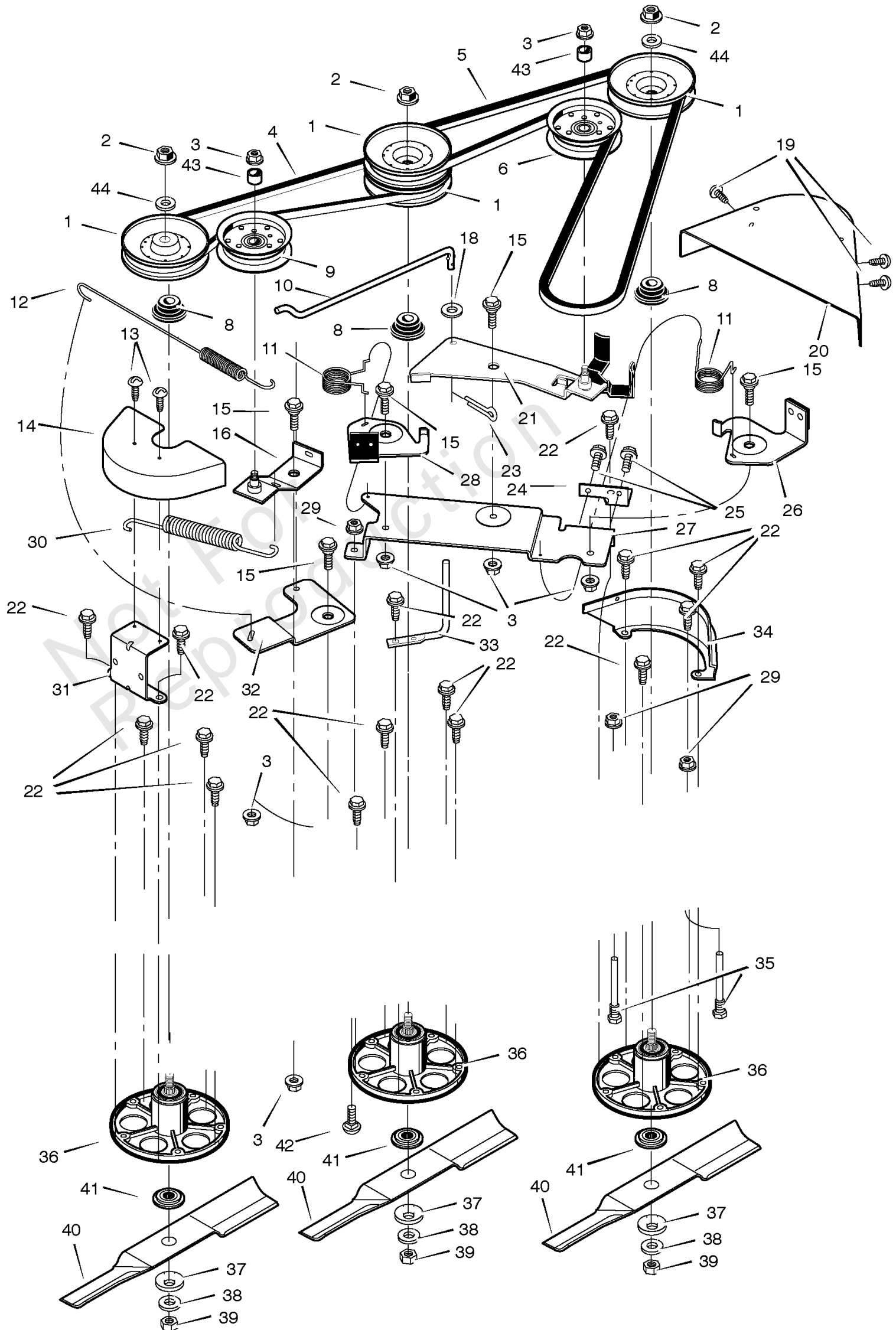
Model Components	Page
Blade Drive.....	4
Decals.....	6
Electrical System.....	8
Engine Mount.....	10
Front Axle.....	12
Front Frame Assembly.....	14
Hood And Grille.....	16
Motion Drive.....	18
Mower Housing.....	22
Mower Housing Suspension.....	24
Rear Frame Assembly.....	26
Seat Deck.....	28
Sector Gear.....	30
Torque Specification Chart.....	32

Not For
Reproduction

Blade Drive

Note: Unless noted otherwise, use the standard torque specifications

Mfg. No: 461603x48A



Blade Drive

REF NO	PART NO	QTY	DESCRIPTION
1	094592MA		Pulley
2	15X121		Nut
3	015X98MA		Nut
4	037X66MA		Belt, Secondary
5	037X96MA		Belt, Primary
6	690387MA		Pulley, Idler
8	1001197MA		Spacer, Pulley -(Included with Ref. No. 36)
9	690549MA		Pulley, Idler
10	094606 Z		Link, Bell Crank
11	166X41MA		Spring
12	165X138MA		Spring
13	26X270		Screw
14	094607E701MA		Cover, Right Pulley
15	009X39MA		Bolt, Shoulder
16	094639E701MA		Arm Assembly, Idler
18	017X47MA		Washer
19	26X277MA		Screw
20	094645E701MA		Cover, Left Pulley
21	690579E701MA		Arm Assembly, Idler
22	0025X7MA		Bolt
23	030X20MA		Pin, Cotter
24	094602E701MA		Bracket, Brake Plate
25	26X249MA		Screw
26	094640E701MA		Brake Assembly, Left
27	094596E701		Plate, Brake Arm
28	094641E701MA		Brake Assembly, Center
29	015X79MA		Nut, Flange
30	165X79MA		Spring
31	092140E701MA		Bracket, Cover
32	094603E701MA		Bell Crank
33	092116 Z		Guide, Belt
34	690221E701MA		Bracket, Pulley Cover
35	091754MA		Guide, Belt
36	1001200MA		JACKSHAFT HSNG ASSY
37	17X166MA		Washer
38	17X165MA		Washer
39	15X100MA		Nut, Blade
40	056631E701MA		SINGLE BLADE
41	690411MA		Adapter, Blade
42	002X53MA		Bolt, Carriage
43	690369MA		Spacer
44	017X87		Washer

No
Diagram
Available
Parts List
Only

Decals

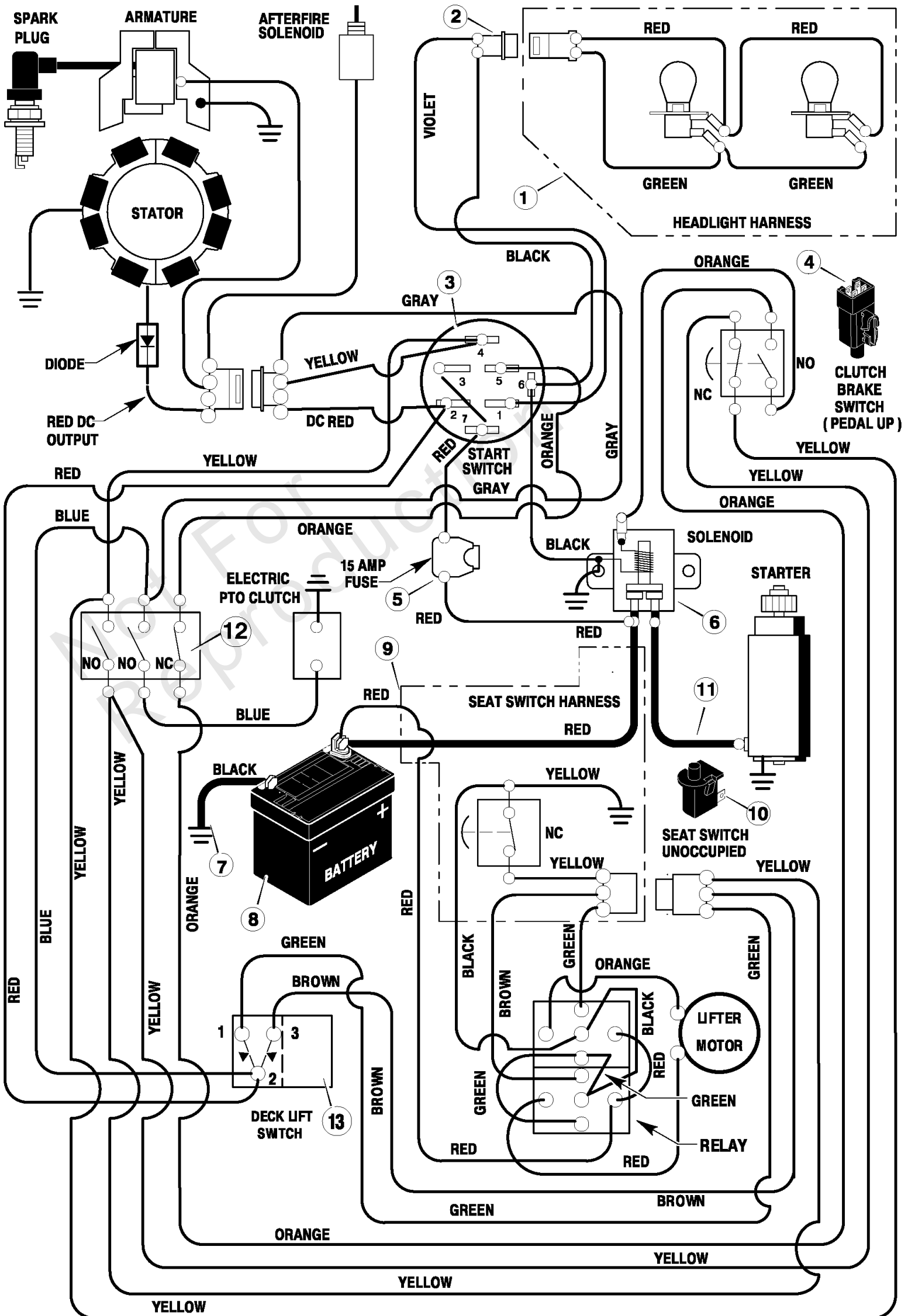
REF NO	PART NO	QTY	DESCRIPTION
	44X7325MA	1	Warning
	44X6279	1	1-6 Height Adjust-Lift
	44X6668	1	Brake/Park Brake
	44X6669	1	Dump Valve
	48X5189	1	Deck Height Control
	44X6456MA	1	Deck Level Position
	44X6675MA	1	Auto Drive
	48X5103MA	1	MURRAY Performance
	48X5102MA	1	MURRAY Performance Logo
	48X5195	1	25 HP B7S INTEK
	48X5057MA	1	Warning, Load Limit
	48X236MA	1	CUT FINGER
	44X6600	1	Gage Wheel Inst.
	44X6870MA	1	NO STEP
	44X7228MA	2	Gage Wheel Leveling
	000048X		3 WAY

Not For Reproduction

Electrical System

Note: Unless noted otherwise, use the standard torque specifications

Mfg. No: 461603x48A



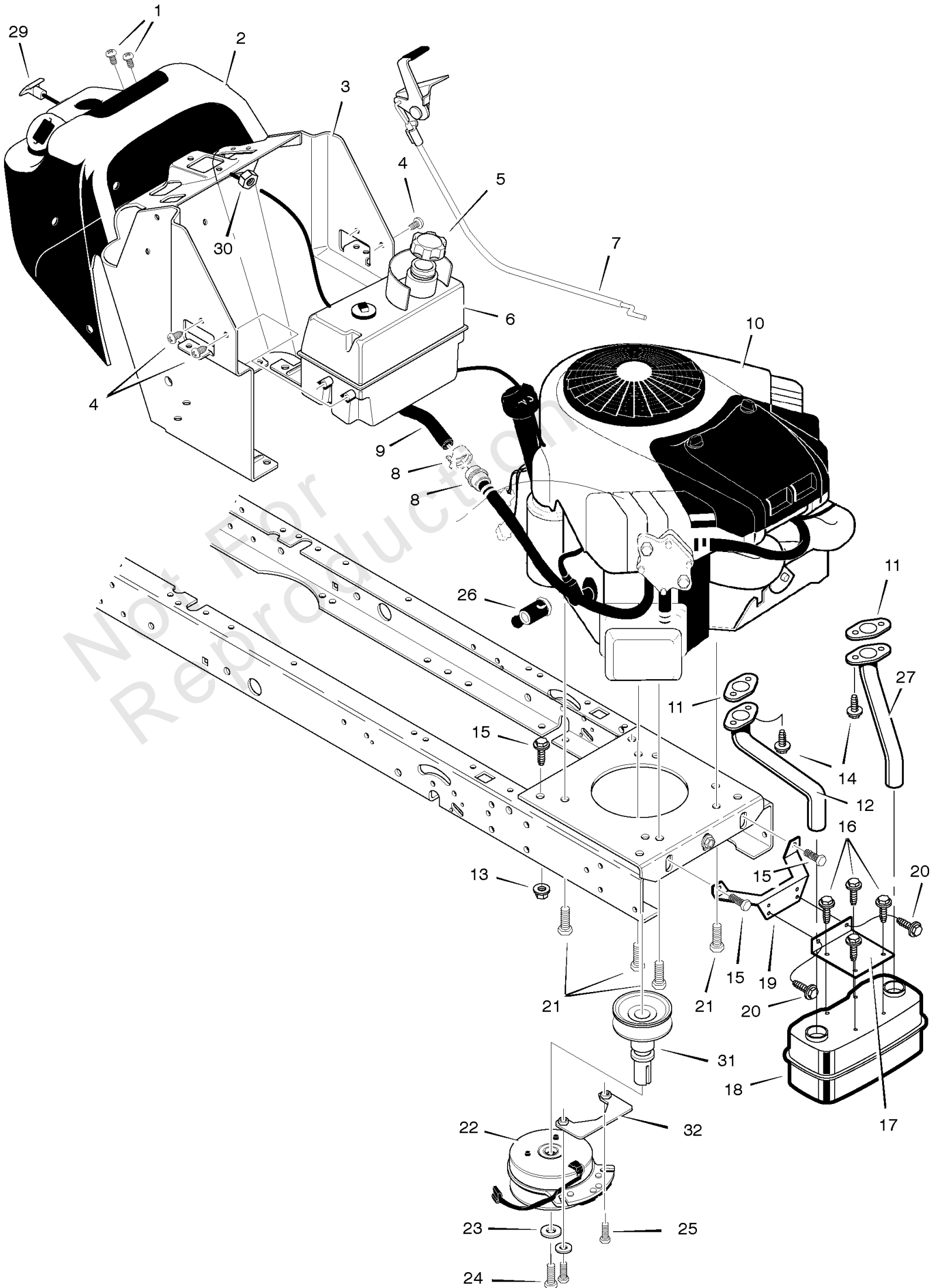
Electrical System

REF NO	PART NO	QTY	DESCRIPTION
1	250X92MA		Harness, Light Wire
--	092372		Socket, Light
--	090084MA		Bulb, Light
2	250X125MA		Harness, Chassis Wire
3	092556MA		Switch, Ignition
--	020729		Key, Ignition
--	091489MA		Nut, Hex
--	091488		Cap, Ignition
4	094136MA		Switch, Limit
5	302031MA		Fuse
--	407078MA		Holder, Fuse
6	094613		Solenoid
--	26X229MA		Screw, Mounting
--	15X116MA		Locknut
7	024X32MA		Cable, Battery Ground
--	26X213MA		Screw, Ground Cable
8	021075		Battery
--	002X82MA		Bolt, Carriage
--	014X79MA		Wingnut
9	250X124MA		Harness, Seat Switch Wire
10	094159MA		Switch, Seat Sensor
11	024X31MA		Cable
12	094927		Switch, Electric PTO
13	1001685MA		Switch, Lifter

Engine Mount

Note: Unless noted otherwise, use the standard torque specifications

Mfg. No: 461603x48A



Engine Mount

REF NO	PART NO	QTY	DESCRIPTION
1	26X270		Screw
2	1001672		Dash
3	95175		Console
4	26X253MA		Screw
5	092317MA		FUEL CAP -(Included with Ref. No. 6)
6	690289MA		Tank, Fuel
7	1001503		Control, Throttle
8	095197MA		Clamp, Hose -(Included with Ref. No. 6)
9	7601033MA		Fuel Line (Must cut to length) -(Included with Ref. No. 6)
10	-----		Engine *
11	711851MA		Gasket, Exhaust
12	690541MA		Tube, Right Exhaust
13	015X88MA		Nut
14	06X103MA		Bolt
15	26X249MA		Screw
16	26X229MA		Screw
17	690538E701MA		Bracket, Muffler
18	093259MA		Muffler
19	690537E701MA		BRKT - MUFF MTG HP
20	26X213MA		Screw
21	0025X7MA		Bolt, Engine Mount
22	690461		Clutch, Electric
23	120383		Washer
24	428644MA		Bolt
25	26X249MA		Screw
26	325547MA		Drain, Oil
--	327422		Cap, Oil Drain
27	690542MA		Tube, Left Exhaust
29	776113MA		Choke
30	015X68MA		Nut
31	690455		Adapter, Pulley
32	094935E717		Plate, Brake

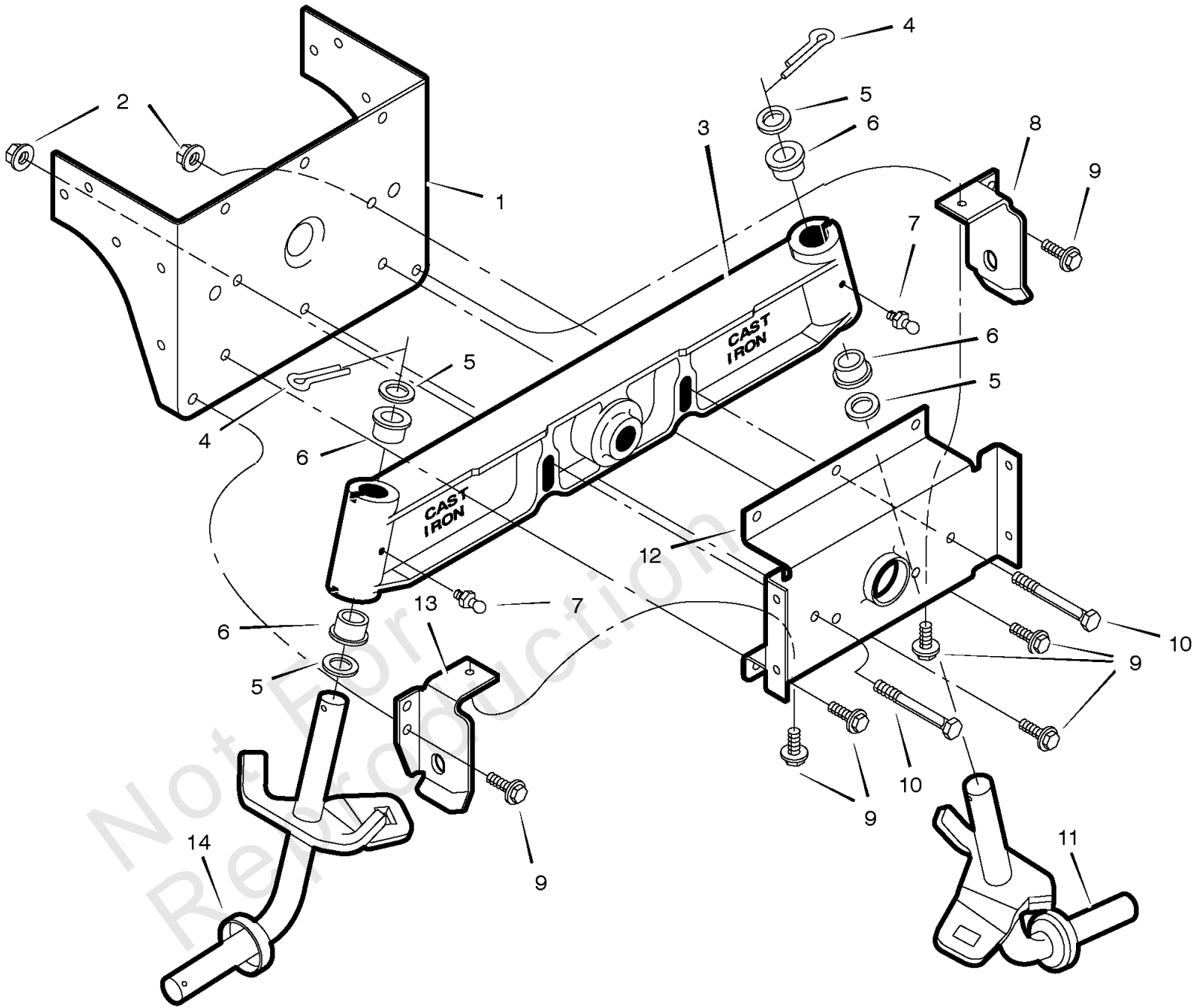
Footnotes:

Note* For information on Replacement Parts see the Central Parts Distributor in your area.

Front Axle

Note: Unless noted otherwise, use the standard torque specifications

Mfg. No: 461603x48A



Front Axle

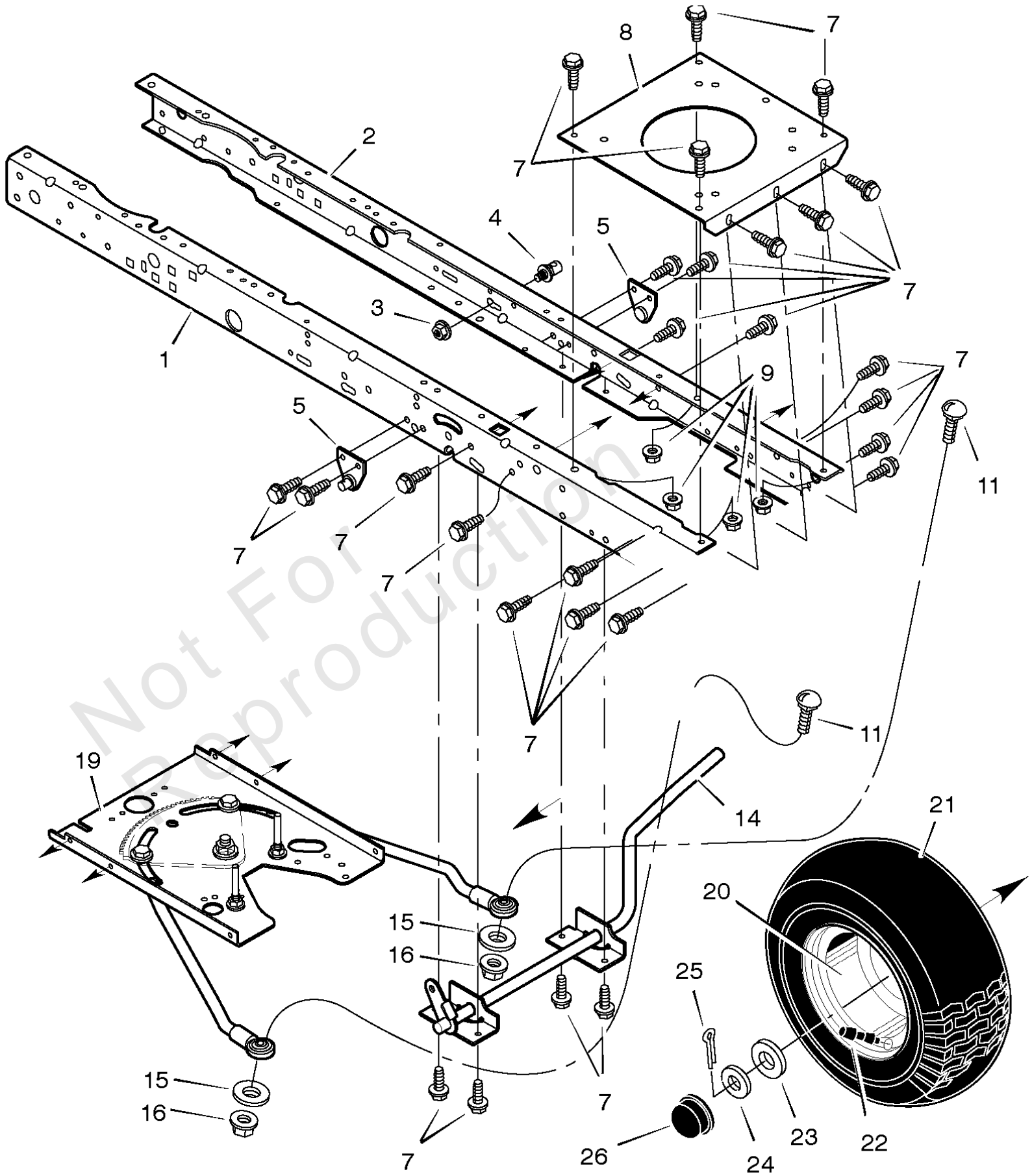
REF NO	PART NO	QTY	DESCRIPTION
1	690067E700		Bracket, Rear Hanger
2	15X118MA		Nut, Flange
3	690232E701		Axle Assembly
4	030X49MA		Pin, Hair
5	017X75MA		Washer
6	093058MA		Bearing, Spindle
7	092530MA		Fitting, Lub
8	690198E700		Hanger, Left Deck
9	26X249MA		Screw
10	01X146MA		Bolt
11	690179E701MA		Spindle Assembly, Left
12	094007E701MA		Hanger, Axle
13	690199E701MA		Hanger, Right Deck
14	690178E701MA		Spindle Assembly, Right

Not For Reproduction

Front Frame Assembly

Note: Unless noted otherwise, use the standard torque specifications

Mfg. No: 461603x48A



Front Frame Assembly

REF NO	PART NO	QTY	DESCRIPTION
1	1001268E701		Frame, Right
2	1001269E701MA		RAIL-FRAME LH
3	015X84MA		Nut, Flange
4	690182MA		Stud, Swivel
5	690406E700		Bracket Ass'y, Suspension
7	26X249MA		Screw
8	094006E700		Plate, Engine
9	015X88MA		Nut
11	002X87		Bolt, Carriage
14	690415E701		Lever, Brake/Clutch
15	17X152		Washer
16	015X41MA		Nut
19	-----		Assembly, Steering *
20	092644650		Wheel & Tire Assembly
--	093064MA		Bearing, Wheel
21	024393MA		Tire *
--	407049MA		Tube
22	024373MA		VALVE STM&CP,TR41 SE
23	17X194MA		Washer
24	17X114MA		Washer
25	030X49MA		Pin, Cotter
26	094618MA		HUB CAP

Footnotes:

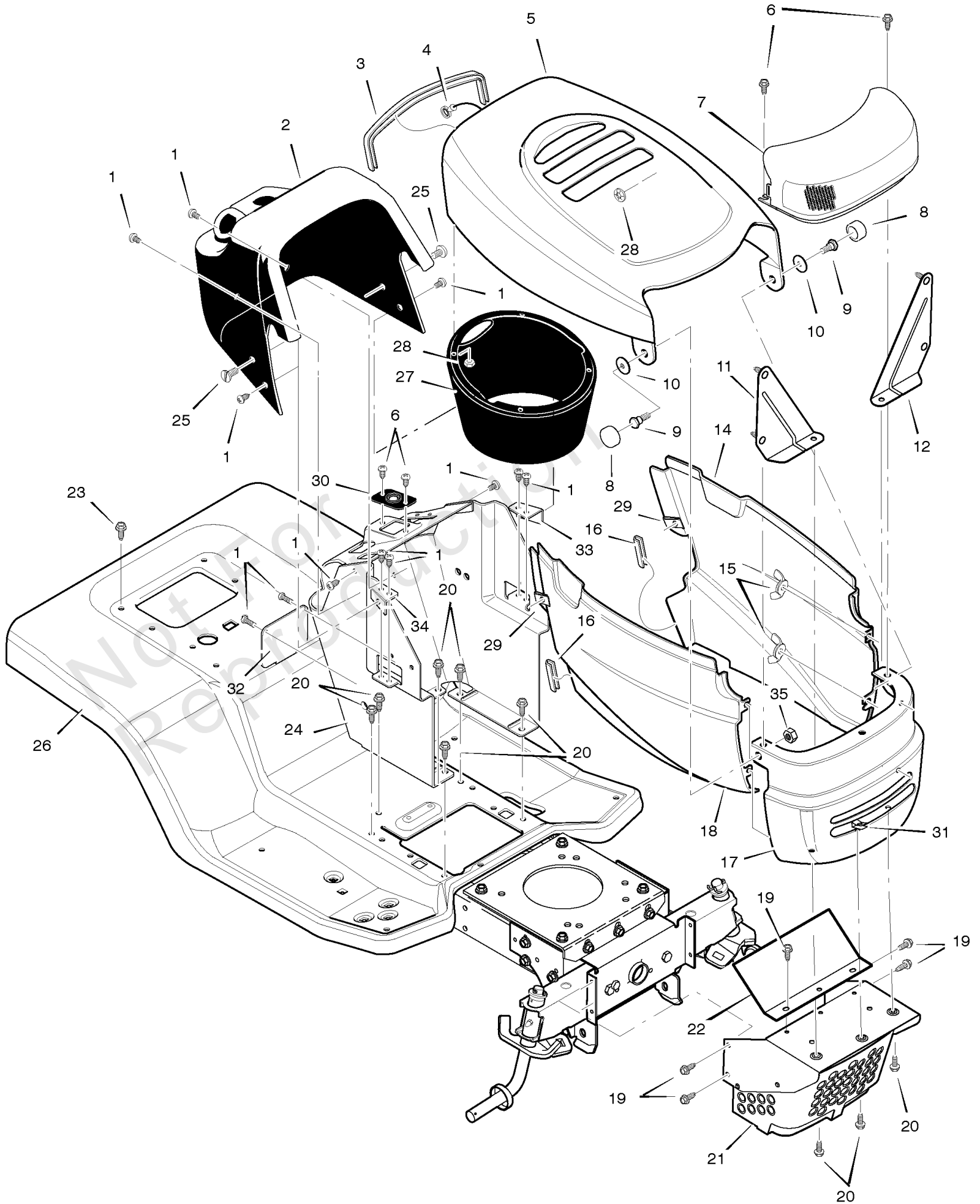
Note* When you order a tire, make sure to give the brand name of the tire so that the tread pattern on the tire will match.

Note* When you order a tire, make sure to give the brand name of the tire so that the tread pattern on the tire will match. See the Sector Gear Repair Parts page.

Hood And Grille

Note: Unless noted otherwise, use the standard torque specifications

Mfg. No: 461603x48A



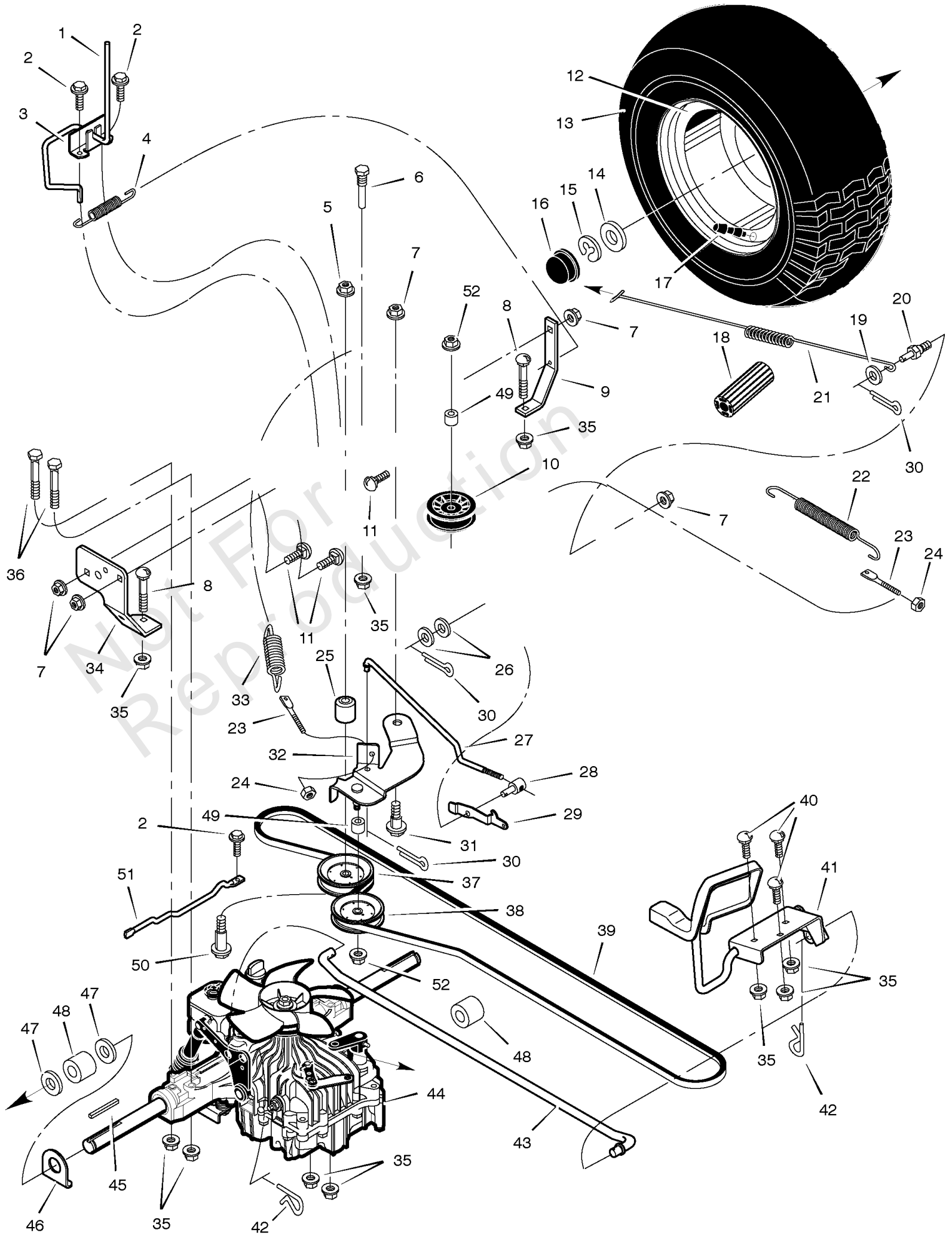
Hood And Grille

REF NO	PART NO	QTY	DESCRIPTION
1	26X270		Screw
2	1001672		Dash
3	7601029		Trim, Hood
4	643129		Cable
5	1001186E700		Hood Assemnly
6	26X238MA		Screw
7	95234		Lens & Reflector Assembly
8	690113MA		Cap, Pivot
9	009X49MA		Bolt, Shoulder
10	690114		Base, Pivot
11	1001169E701		Brace, Right Grille Assembly
12	1001171E701		Brace, Left Grille Assembly
14	094457E701		Panel, Left Side
15	014X79MA		Wingnut
16	7601029		Trim 0.39"
17	1001126E701		Grille
18	094458E701		Panel, Right Side
19	26X277MA		Screw
20	26X249MA		Screw
21	1001191E701		Guard Assembly, Muffler
22	1001504		Shield, Upper Heat
23	26X263MA		SCREW.25-20 S-T
24	95175E700		Console
25	26X239MA		Screw
26	094629E700		Deck, Seat
27	1001158		Plenum
28	028X49MA		Retainer, Push
29	028X33MA		J-Nut
30	1001491MA		Bearing, Steering
31	028X57		U-Nut
32	093007E701MA		Panel, Access
33	094464		Bracket, Right Console
34	094465		Bracket, Left Console
35	015X84MA		Nut

Motion Drive

Note: Unless noted otherwise, use the standard torque specifications

Mfg. No: 461603x48A



Motion Drive

REF NO	PART NO	QTY	DESCRIPTION
1	690234MA	1	ROD, Clutch
2	26X249MA		CAPSCREW, Hex Head, 5/16-18 x 3/4
3	1001214 Z		Bracket, Disconnect
4	165X136		Spring - Extension
5	015X41MA		NUT, Lock, 1/2-13
6	020619MA		Screw, Guide
7	015X84MA		NUT, Hex Flange, Center Lock, 3/8-16
8	002X88MA		BOLT, CARRIAGE - 5/16-18 X 2.00
9	690231E701		Bracket, Torque
10	690393		CLAMP-CASING
11	002X78		Bolt, Carriage
12	093263650		Assembly, Wheel and Tire
13	407920		Tire Only * -(*)
14	17X193MA		Washer
15	011X23MA		E-RING, Retainer
16	094618MA		HUB CAP
17	024373MA		VALVE STM&CP,TR41 SE
18	021544MA		PEDAL, Clutch and Brake
19	17X169MA		WASHER, Flat, 1
20	690243		BASE-A/C PRIMER
21	165X135		Spring, Extension
22	165X133MA		SPRING, EXTENSION LIFT
23	094042ZMA		STUD, Spring Mounting
24	015X79MA		NUT, Hex Flange, 5/16-18
25	690235		SEAL-VALVE
26	017X48MA		WASHER, Flat, 3/8
27	690234		GASKET, Carburetor Plate
28	094815ZMA		NUT-ADJUSTING
29	094045 Z		Latch, Parking Brake
30	030X20MA		COTTERPIN, 3/4
31	009X39MA		BOLT, Shoulder, 3/8-16 x 1/2
32	690416 Z		Assembly, Idler Arm
33	165X116MA		SPRING, Extension
34	690240E701		Bracket, Torque
35	015X88MA		NUT, Hex Flange, Center Lock, 5/16-18
36	01X155MA		BOLT, Hex, 5/16-18 x 2-1/2
37	023339MA		Pulley, Backside Idler
38	690410MA		PULLEY, Idler, 3"
39	037X97MA		Belt, Drive
40	002X53MA		BOLT, Carriage, 5/16-18 x 5/8
41	1001231E701		Pedal Assembly, Hydro
42	0031X4MA		PIN, Hair
43	690241		SPRING, Governor
44	-----		Transaxle, Hydro **
45	024039MA		Key, Square
46	690242E701		Washer, Thrust
47	17X118 Z		WASHER, 1-1.3 16G FLT

Footnotes:

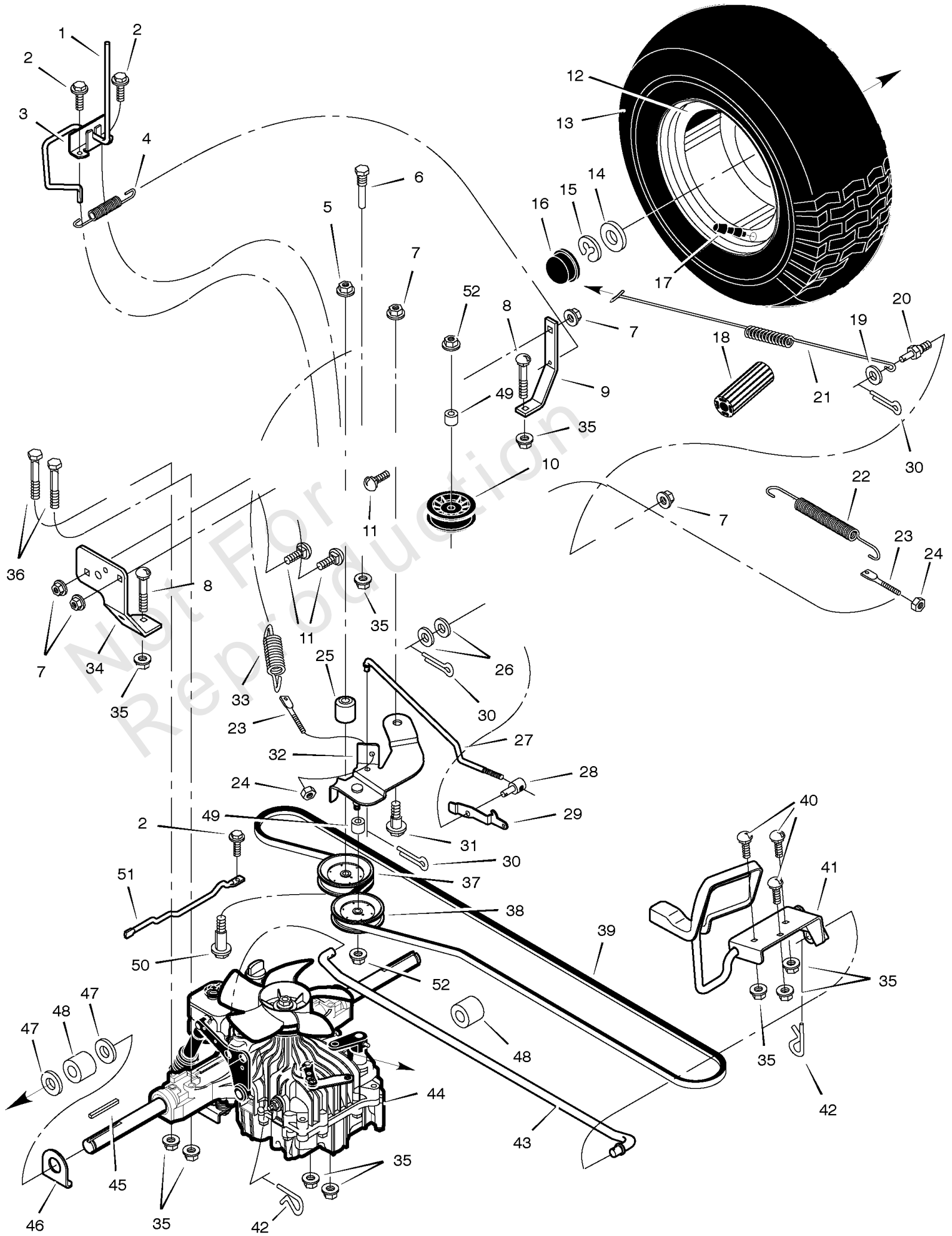
Note** For information on Replacement Parts see the Central Parts Distributor on your area.

Note* When you order a tire, make sure to give the brand name of the tire so that the tread pattern on the tire will match.

Motion Drive

Note: Unless noted otherwise, use the standard torque specifications

Mfg. No: 461603x48A



Motion Drive

REF NO	PART NO	QTY	DESCRIPTION
48	690419 Z		Spacer
49	690369MA		SPACER, 1/2 in To 17 mm
50	01X165		Bolt
51	690392		SPACER
52	015X98MA		NUT, Hex Flange, Center Lock, 3/8-16

Not For
Reproduction

Footnotes:

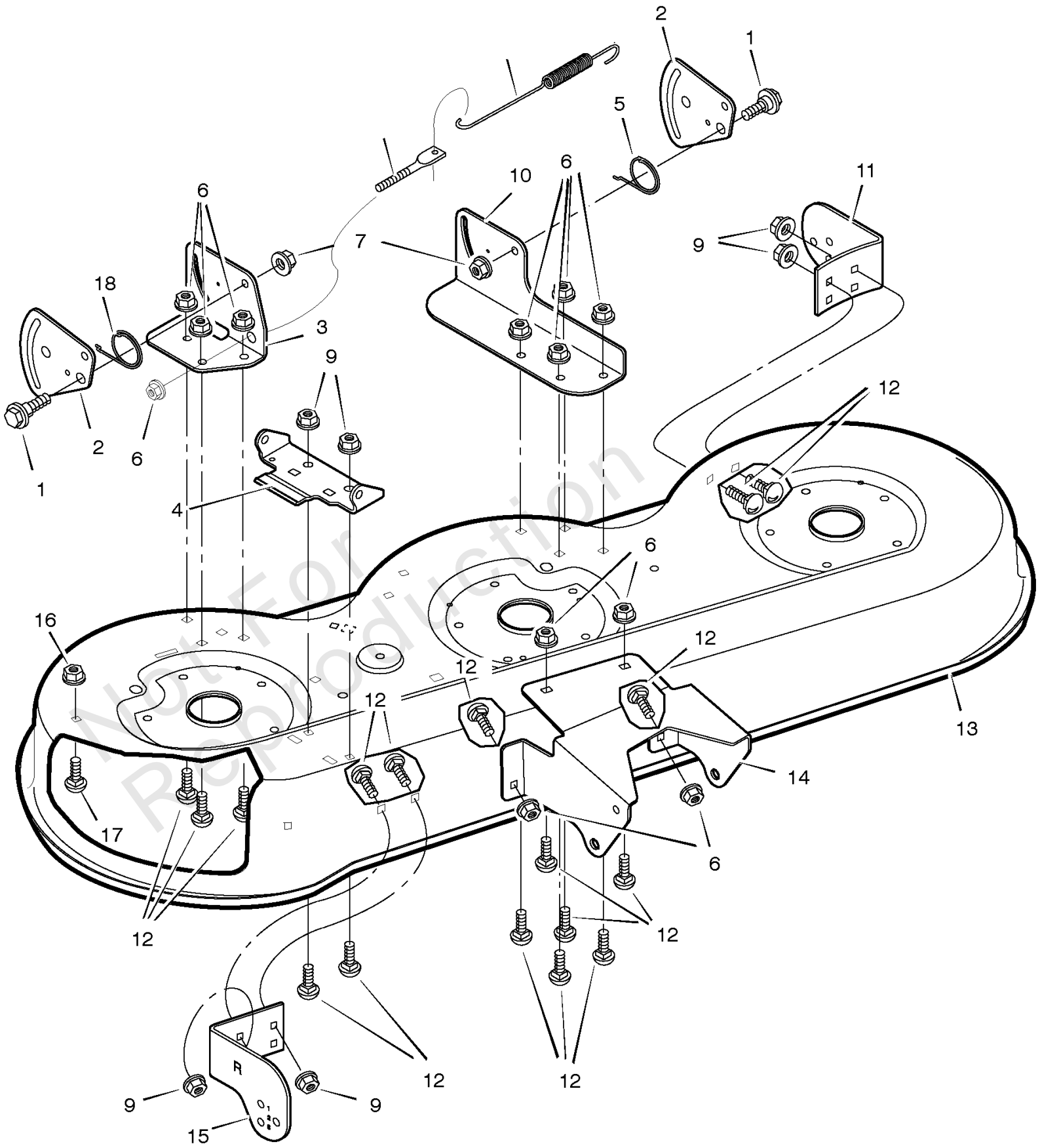
Note** For information on Replacement Parts see the Central Parts Distributor on your area.

Note* When you order a tire, make sure to give the brand name of the tire so that the tread pattern on the tire will match.

Mower Housing

Note: Unless noted otherwise, use the standard torque specifications

Mfg. No: 461603x48A



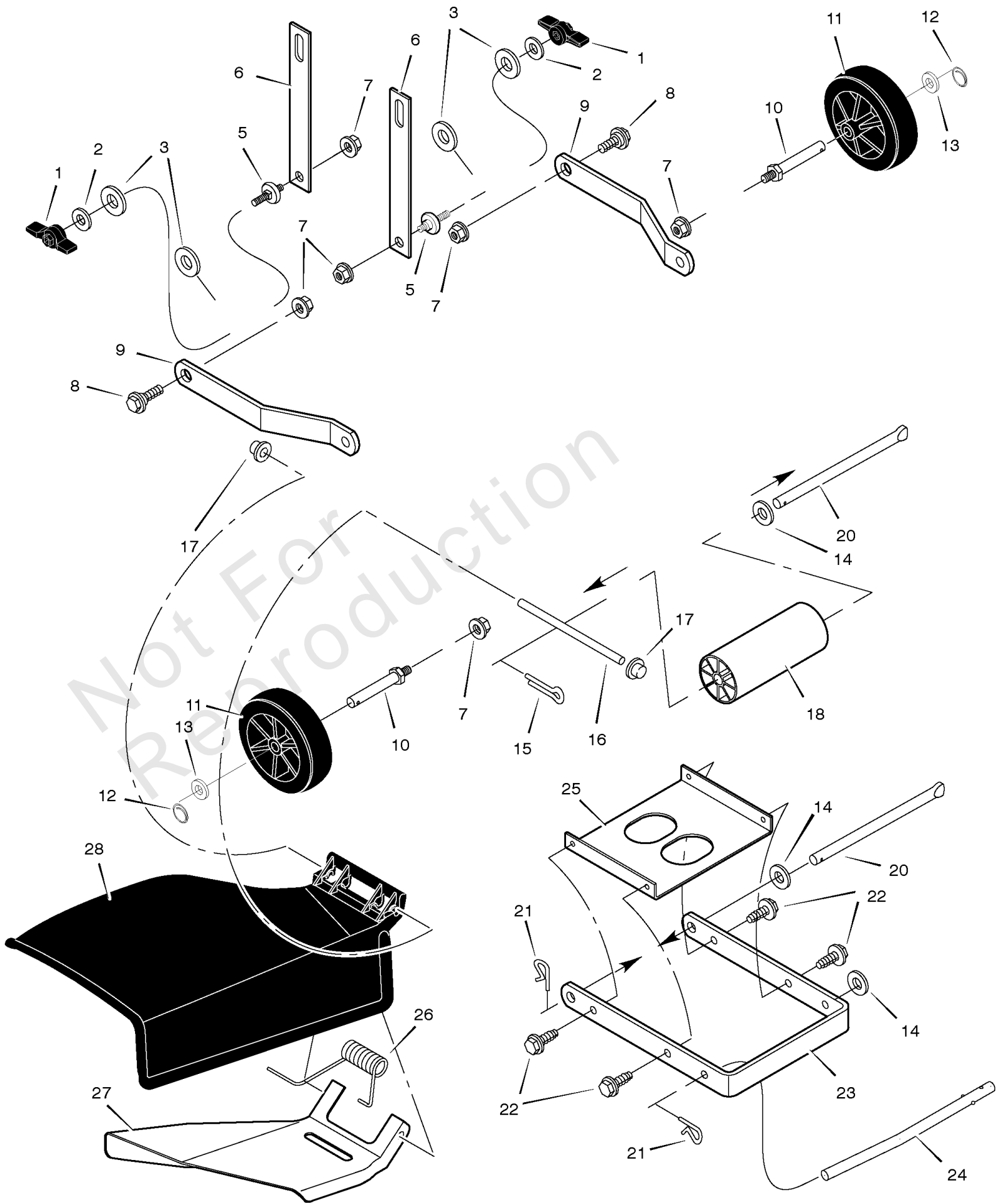
Mower Housing

REF NO	PART NO	QTY	DESCRIPTION
1	009X51MA		BOLT-SHD.38-16X.499D
2	690128E700		Plate, Suspension
3	094598E700		Bracket, Right Rear
4	092104E701MA		Bracket, Hinge
5	166X43MA		Spring, Left
6	015X79MA		Nut, Flange
7	015X84MA		Nut, Flange
9	015X88MA		Nut, Flange
10	094600E700MA		Bracket, Left Lifter
11	094919E700		Bracket, Left Gauge Wheel
12	002X53MA		Bolt, Carriage
13	1001589E701		Housing, Blade
14	094997SEMA		Bracket, Front Deck
15	094918E701MA		Bracket, Right Gauge Wheel
16	028X64MA		Retainer
17	002X74MA		Bolt, Carriage
18	166X42MA		Spring, Right
23	1001694 Z		Rod, Adjuster
24	165X131MA		Spring, Extension

Mower Housing Suspension

Note: Unless noted otherwise, use the standard torque specifications

Mfg. No: 461603x48A



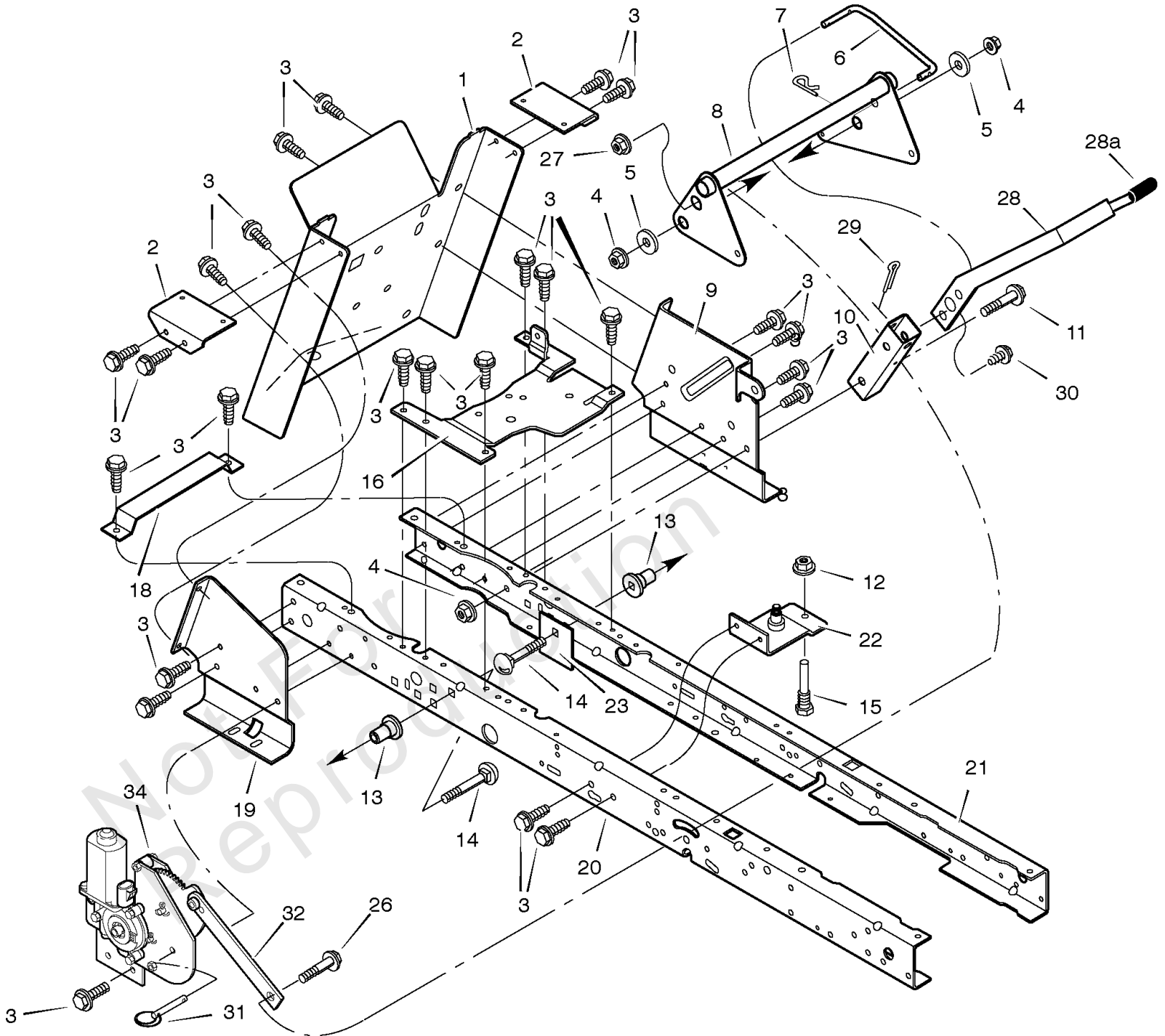
Mower Housing Suspension

REF NO	PART NO	QTY	DESCRIPTION
1	094068MA		Knob
2	017X45MA		WASHER,FLAT .33 1. 16
3	094137MA		FRICITION PAD
5	776060MA		Pin, Hanger
6	690550E701MA		Link, Lift
7	015X84MA		Nut, Flange
8	009X52MA		Bolt, Shoulder
9	690578E701MA		Bracket, Rear Suspension
10	094025MA		BOLT, Gauge Wheel
11	092683MA		Wheel
12	031X11MA		Pin, Hair
13	017X91MA		Washer
14	17X103MA		Washer
15	030X49MA		Pin, Cotter
16	092159ZMA		Rod, Deflector
17	028X23MA		Push-On Cap
18	1001252MA		Roller
20	094996MA		Rod, Deck Suspension
21	0031X4MA		Pin, Hair
22	26X249MA		Screw
23	094765E700		Bracket, Front Suspension
24	094158ZMA		Rod, Hanger
25	094604E700		Stiffener
26	166X34MA		Spring
27	092103E701MA		Deflector, Inside
28	092100MA		Deflector, Chute

Rear Frame Assembly

Note: Unless noted otherwise, use the standard torque specifications

Mfg. No: 461603x48A



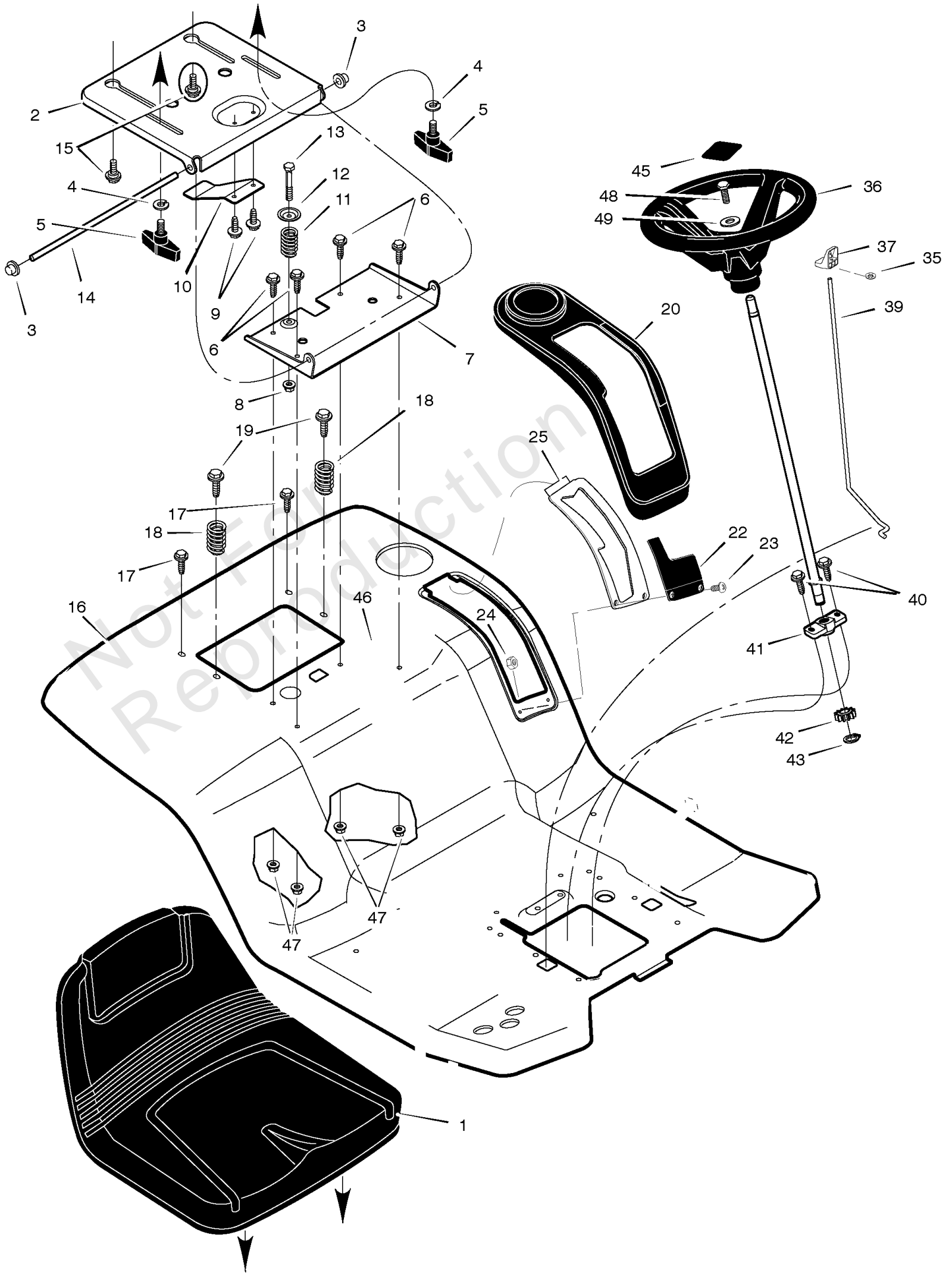
Rear Frame Assembly

REF NO	PART NO	QTY	DESCRIPTION
1	690094E701		Frame, Rear Hitch
2	690077E700		Bracket, Seat Deck
3	26X249MA		Screw
4	015X84MA		Nut, Flange
5	17X168ZMA		Washer
6	690550E701MA		Link, Lift Handle
7	0031X4MA		Pin, Hair
8	1001692E701		Assembly, Lifter
9	1001691E701		Bracket, Left Transaxle
10	1001693E701		Bracket, Lift Pivot
11	009X53MA		Bolt, Shoulder
12	015X79MA		Nut
13	690151MA		Spacer, Lifter
14	002X85MA		Bolt, Carriage
15	094384MA		Guide, Belt
16	690233E701		Bracket, Stationary Idler
18	690482E701		Plate
19	690064E700		Bracket, Right Transaxle
20	1001268E701		Frame, Right
21	1001269E701MA		RAIL-FRAME LH
22	690417E701		Bracket, Idler
23	1001098E701		Plate, Stiffening
26	009X50MA		Bolt, Shoulder
27	015X88MA		Nut, Flange
28	1001673 Z		Indicator, Electric Lift
28A	1401337		Grip, Electric Lift
29	030X20MA		Pin, Cotter
30	025X15MA		Screw
31	1001701MA		Pin, Stop
32	1001682E700		Link, Bar
34	1001675MA		Ass'y, Gear Case & Motor -(Included with Ref. No. 32)

Seat Deck

Note: Unless noted otherwise, use the standard torque specifications

Mfg. No: 461603x48A



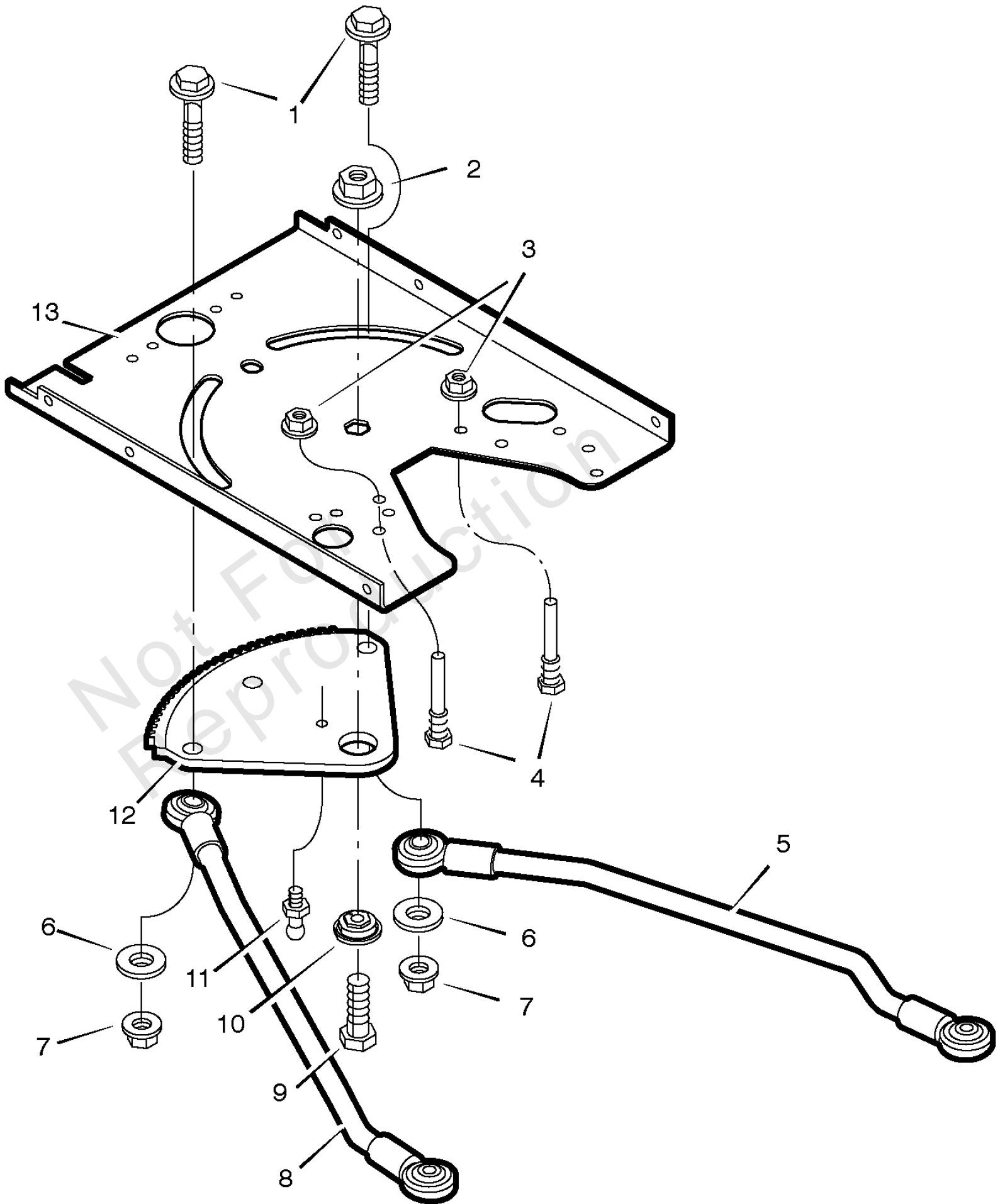
Seat Deck

REF NO	PART NO	QTY	DESCRIPTION
1	095415MA		Seat
2	094154E701MA		Support, Seat
3	028X23MA		Push-On Cap
4	017X47MA		Washer
5	1001054MA		Bolt, Wing
6	001X45MA		Bolt
7	1001648E701MA		Bracket, Pivot
8	015X89MA		NUT .25-20 FLANGELOCK
9	26X229MA		Screw
10	094057MA		Spring, Leaf
11	164X31		Spring
12	094155 Z		Washer, Cup
13	009X55MA		Bolt
14	094156ZMA		Rod, Pivot
15	009X56MA		Bolt, Shoulder
16	094629E700		Deck, Seat
17	26X263MA		SCREW.25-20 S-T
18	164X30MA		Spring
19	26X249MA		Screw
20	094469		Cover, Detent with Cup Holder
22	094483		Cover, Detent
23	009X47MA		Bolt
24	015X81MA		NUT#10-24 MCLEANLOCK
25	1001671E700		Plate, Detent
35	028X49MA		Nut, Push
36	1001226MA		Wheel, Steering
37	095315MA		Knob, Parking Brake
39	1001217 Z		Rod, Parking Brake
40	26X267MA		Screw
41	094124MA		Bearing, Lower
42	690183MA		GEAR - PINION
43	011X25MA		E-Ring
44	690625		Shaft, Steering
45	1001441MA		Insert, Steering Wheel
47	15X123MA		Nut
48	0025X3MA		Screw, Hex
49	17X146MA		Washer
--	F-030767L		Manual and Parts List

Sector Gear

Note: Unless noted otherwise, use the standard torque specifications

Mfg. No: 461603x48A



Sector Gear

REF NO	PART NO	QTY	DESCRIPTION
1	009X62MA		Bolt, Shoulder
2	15X111MA		Nut, Lock
3	015X79MA		Nut, Flange
4	094384MA		Guide, Screw
5	690146E700		Link, Left Drag
6	17X168ZMA		Washer
7	015X84MA		Nut, Flange
8	690145E700		Link, Right Drag
9	001X84MA		CAPSCREW, Hex Head, 5/16-18 x 1
10	690180MA		Bearing, Sector Gear
11	092530MA		Fitting, Lub
12	690147MA		Gear, Sector
13	1001121E701MA		Plate, Steering

Not For Reproduction

Hardware Identification & Torque Specifications

Torque Specification Chart								
FOR STANDARD METRIC MACHINE HARDWARE (Tolerance ± 20%)								
Property Class	5.6		8.8		10.9		12.9	
	Class 5.6		Class 8.8		Class 10.9		Class 12.9	
Size Of Hardware	in/lbs	Nm.	in/lbs	Nm.	in/lbs	Nm.	in/lbs	Nm.
	ft/lbs		ft/lbs		ft/lbs		ft/lbs	
M3	5.88	.56	13.44	1.28	19.2	1.80	22.92	2.15
M4	13.44	1.28	30.72	2.90	43.44	4.10	52.56	4.95
M5	26.4	2.50	60.96	5.75	5.97	8.10	7.15	9.7
M6	44.64	4.3	7.3	9.9	10.3	14	12.1	16.5
M7	5.2	7.1	12.1	16.5	16.9	23	19.9	27
M8	7.7	10.5	17.7	24	25	34	29	40
M10	15	21	35	48	50	67	59	81
M12	26	36	61	83	86.2	117	103	140
M14	42	58	101	132	136	185	162	220
M16	64	88	147	200	210	285	250	340
M18	89	121	202	275	287	390	346	470
M20	126	171	290	390	405	550	486	660
M22	169	230	390	530	559	745	656	890
M24	217	295	497	375	708	960	840	1140
M27	320	435	733	995	1032	1400	1239	1680
M30	435	590	995	1350	1401	1900	1681	2280
M33	590	800	1349	1830	1902	2580	2278	3090
M36	759	1030	1740	2360	2441	3310	2935	3980
M39	988	1340	2249	3050	3163	4290	3798	5150

Torque Specification Chart						
FOR STANDARD MACHINE HARDWARE (Tolerance ± 20%)						
Hardware Grade	No Marks		SAE Grade 5		SAE Grade 8	
	SAE Grade 2		SAE Grade 5		SAE Grade 8	
Size Of Hardware	in/lbs	Nm.	in/lbs	Nm.	in/lbs	Nm.
	ft/lbs		ft/lbs		ft/lbs	
8-32	19	2.1	30	3.4	41	4.6
8-36	20	2.3	31	3.5	43	4.9
10-24	27	3.1	43	4.9	60	6.8
10-32	31	3.5	49	5.5	68	7.7
1/4-20	66	7.6	8	10.9	12	16.3
1/4-28	76	8.6	10	13.6	14	19.0
5/16-18	11	15.0	17	23.1	25	34.0
5/16-24	12	16.3	19	25.8	29	34.0
3/8-16	20	27.2	30	40.8	45	61.2
3/8-24	23	31.3	35	47.6	50	68.0
7/16-14	30	40.8	50	68.0	70	95.2
7/16-20	35	47.6	55	74.8	80	108.8
1/2-13	50	68.0	75	102.0	110	149.6
1/2-20	55	74.8	90	122.4	120	163.2
9/16-12	65	88.4	110	149.6	150	204.0
9/16-18	75	102.0	120	163.2	170	231.2
5/8-11	90	122.4	150	204.0	220	299.2
5/8-18	100	136	180	244.8	240	326.4
3/4-10	160	217.6	260	353.6	386	525.0
3/4-16	180	244.8	300	408.0	420	571.2
7/8-9	140	190.4	400	544.0	600	816.0
7/8-14	155	210.8	440	598.4	660	897.6
1-8	220	299.2	580	788.8	900	1,244.0
1-12	240	326.4	640	870.4	1,000	1,360.0

The guides and ruler furnished below are designed to help you select the appropriate hardware.



Nut, M8

Thread Diameter (mm)

Inside Diameter (in) Threads per inch

Nut, 1/2-16



Screw, M8- 1.25 x 25

Thread Diameter (mm) Distance between threads (mm) Body Length (mm)

Body Diameter Threads per inch Body Length (in)

Screw, 1/2- 16 x 2



Standard Hardware Sizing

When a washer or nut is identified as 1/2" (M8), this is the *Nominal size*, meaning the *inside diameter* is 1/2 inch (8mm metric thread diameter); if a second number is present it represents the *threads per inch* (distance between threads).

When bolt or capscrew is identified as 1/2 - 16 x 2" (M8 - 1.25 x 50), this means the *Nominal size*, or body diameter is 1/2 inch (8mm metric thread diameter), the second number, 16, represents the *threads per inch*, (*distance between threads*). The final number is the body length of the bolt or screw, 2 inches (50mm).

NOTES

- These torque values are to be used for all hardware excluding: locknuts, self-tapping screws, thread forming screws, sheet metal screws and socket head setscrews.
- Recommended seating torque values for locknuts:
 - for prevailing torque locknuts - use 65% of grade 5 torques.
 - for flange whizlock nuts and screws - use 135% of grade 5 torques.
- Unless otherwise noted on assembly drawings, all torque values must meet this specification.

Common Hardware Types

Hex Head Capscrew



Washer



Carriage Bolt



Hex Nut

Wrench & Fastener Size Guide

1/4" Bolt or Nut Wrench—7/16"	5/16" Bolt or Nut Wrench—1/2"	3/8" Bolt or Nut Wrench—9/16"	7/16" Bolt or Nut Wrench (Bolt)—5/8" Wrench (Nut)—11/16"	1/2" Bolt or Nut Wrench—3/4"
M6 Bolt or Nut Wrench—10mm	M8 Bolt or Nut Wrench—13mm	M10 Bolt or Nut Wrench—17mm	M12 Bolt or Nut Wrench—19mm	M14 Bolt or Nut Wrench—22mm

MURRAY®